



ALKANE
RESOURCES LTD
ABN 35 000 689 216

ANNUAL ENVIRONMENTAL MANAGEMENT REPORT

for the

PEAK HILL GOLD MINE 2025



Peak Hill Gold Mine Proprietary Pit looking north 24 June 2025



ALKANE
RESOURCES LTD
ABN 35 000 689 216

ANNUAL ENVIRONMENTAL MANAGEMENT REPORT

for the

PEAK HILL GOLD MINE

2025

Prepared by:

Alkane Resources Ltd
ABN: 35 000 689 216
Level 4, 66 Kings Park Road
West Perth WA 6005

Telephone: (08) 9227 5677
Facsimile: (08) 9227 8178
Email: mike.sutherland@alkres.com

23 February 2026

Peak Hill Gold Mine

Annual Environmental Management Report 1 January to 31 December 2025

Name of Mine: Peak Hill Gold Mine

Rehabilitation Management Plan Commencement Date: 23 November 2022

Mining Authorisations (Lease / License No.): MLs1351, 1364, 6036, 6042, 6277, 6310, 6389, 6406, 1479, GL5884

Land Owner/Occupier: Alkane Resources Ltd

Tenure: Freehold (Lot 81) and leasehold

Pre-mining Landuse; Lot 81 – Agriculture with remainder mining 1889-1917 and easements in favour of Parkes Shire Council

Name of Authorisation / Authorisation holder(s): Alkane Resources Ltd

Name of Mine Operator (if different): N/A

Name and Contact Details of the Mine Manager (or equivalent):

Michael Sutherland

General Manager NSW

PO Box 910

Dubbo, NSW, 2830

Phone: (02) 6882 2866 Mob: 0427 691733

Name and Contact Details of Environmental Representative:

As above

Name of Representative(s) of the Authorisation Holder(s): Michael Sutherland

Title of Representative(s) of the Authorisation Holder(s): General Manager NSW

Signature of Representative(s) of the Authorisation Holder(s):



Due Date 1 March 2025

Final

Version: 1

CONTENTS

	Page
1. INTRODUCTION	5
1.1. SCOPE AND FORMAT	5
1.1.1. Scope	5
1.1.2. History of Operations	5
1.2. CURRENT CONSENTS, AUTHORISATIONS AND LICENSES	11
1.3. LAND OWNERSHIP AND LAND USE	12
1.3.1. Community Consultation	12
1.3.2. Government Agency Consultation	13
2. MINING ACTIVITIES	14
2.1. PROJECT DESCRIPTION	14
2.2. ACTIVITIES OVER THE RMP TERM	16
2.2.1. Exploration	16
2.2.2. Construction	17
2.2.3. Mining Operations during the Reporting period	17
2.3. REHABILITATION DURING THE AEMR PERIOD	18
2.3.1. Further Development of Final Rehabilitation Plan (Sep 2023)	18
3. METEOROLOGICAL DATA	21
4. ENVIRONMENTAL PERFORMANCE	24
5. COMPLAINTS AND LIAISON	25
APPENDIX 1- PHOTOGRAPHS	26
APPENDIX 2- CORRESPONDENCE	27

FIGURES

Figure 1: Safety signage near Bobby Burns walking trail December 2025	6
Figure 2: Peak Hill Gold Mine Local Setting (source: EIS 1993)	7

PLANS

Plan 1A – Project Location	8
Plan 1C – Mining & Built Environment – 31 December 2023	9
Plan 1 – Final Landform Use & Features (from RMP 2023)	10

TABLES

Table 1: Presents the consents, authorisations and licences held in relation to the Mine	11
Table 2: Major Assets per Domain	15
Table 3: Predicted Cumulative Disturbance and Rehabilitation Progression during the next Three Year Term	19
Table 4: Maintenance Activities on Rehabilitated Land	20

1. INTRODUCTION

1.1. SCOPE AND FORMAT

1.1.1. Scope

This Annual Environmental Management Report (AEMR) for the Peak Hill Gold Mine (“the Mine”) has been prepared by Alkane Resources Ltd (“the Company”) following the EDG12 Small Mine AEMR Guide (2012).

Parkes Shire Council is the consent authority (DA648/93) for the Peak Hill Gold Mine and consent condition 7.1 requires an Annual Report detailing the performance of the development.

The reporting period for the Peak Hill Gold Mine AEMR is 1 January to 31 December.

A letter from NSW Planning & Environment (dated 8 May 2017) established a due date for annual reporting as 1st March.

The mine had an approved (30 March 2016) Mining Operations Plan 2014-2022 for the Peak Hill Gold Mine (MOP) to take the site through to relinquishment or renewal by 17 January 2022.

Schedule 8A of the Mining Regulation 2016 imposed standard conditions on all mining leases in NSW. The provisions of Schedule 8A commenced on 2 July 2022. MOPs have been replaced with a Rehabilitation Management Plan (RMP) and Forward Program which required consultation during preparation with Resources Regulator and PSC.

Rehabilitation Objectives and Rehabilitation Completion Criteria to form the basis of a RMP were circulated to the Resources Regulator and Parkes Shire Council in late 2022. The current RMP is from September 2023.

An application to renew the Mining Leases was lodged 6 July 2021. Instruments of renewal were issued 4 July 2022.

The Mine is located immediately east and northeast of the township of Peak Hill, in the Central West of NSW (**Figure 1** and **Plan 1A**).

The key MLs for the Peak Hill Gold Mine were issued to Alkane by the Minister for Mineral Resources in 1993 (see **Plan 1C**). As additional resources were identified through exploration drilling, additional MLs were granted to form a contiguous area for mining and gold processing for the purpose of this document the area covered by MLs is referred to as the “Mine Site”. Freehold agricultural land (now Lot 81 in DP 12155789) was purchased by Alkane to accommodate the mine infrastructure.

1.1.2. History of Operations

The Peak Hill Gold Mine operated as a drill and blast open cut gold mine between 1996 and 2002. Gold was extracted using heap leach cyanide technology until 2005 - when the last gold was poured on 20 December 2005.

The Waste Rock Emplacement, ROM Pad and haul roads were rehabilitated in December 2002 before the Macmahon Contractors mining fleet demobilised from site (**Plan 2**).

When gold production ceased from the heap leach in November 2005, that landform was reshaped and rehabilitated by McCutcheon's Earthmoving and the Soil Conservation Service designed and built the downslope structures.

All but 8.5Ha of the mine site was rehabilitated by 2005 and the site has essentially been under care and maintenance since then. A Site Supervisor, based in Peak Hill, maintains the mine site.

In June 2017, four hectares of the ML1364 was excised (now Lot 80 in DP1215579) and gifted to PSC to enable the establishment of a waste transfer station to replace the exhausted Peak Hill landfill facility. Roose Road was extended to service the new site which re-cycled the Macmahon Contractors site infrastructure.

The final steps in rehabilitation of the site are described in RMP (Sep 2023). RMP **Plan 1** shows the proposed final landform and rehabilitation features.

Gold Production from the Peak Hill Gold Mine from October 1996 to December 2005 was 153,657 fine ounces.

The Open Cut voids are a feature of a walking trail, operated by Parkes Shire Council (under a formal *Agreement for Tour Arrangements*), offering free access to the public during opening hours.

A Tourist Mine Permit issued by the Minister in 2003 is no longer valid (Work Health and Safety (Mines & Petroleum Sites) Act 2013) and the Work Health and Safety (Mines and Petroleum Sites) Regulation 2014) as the PHGM is considered an active minesite with ongoing resource definition drilling and exploration occurring on the leases.



Figure 1: New safety signage around walking trails. Photo taken 8 December 2025

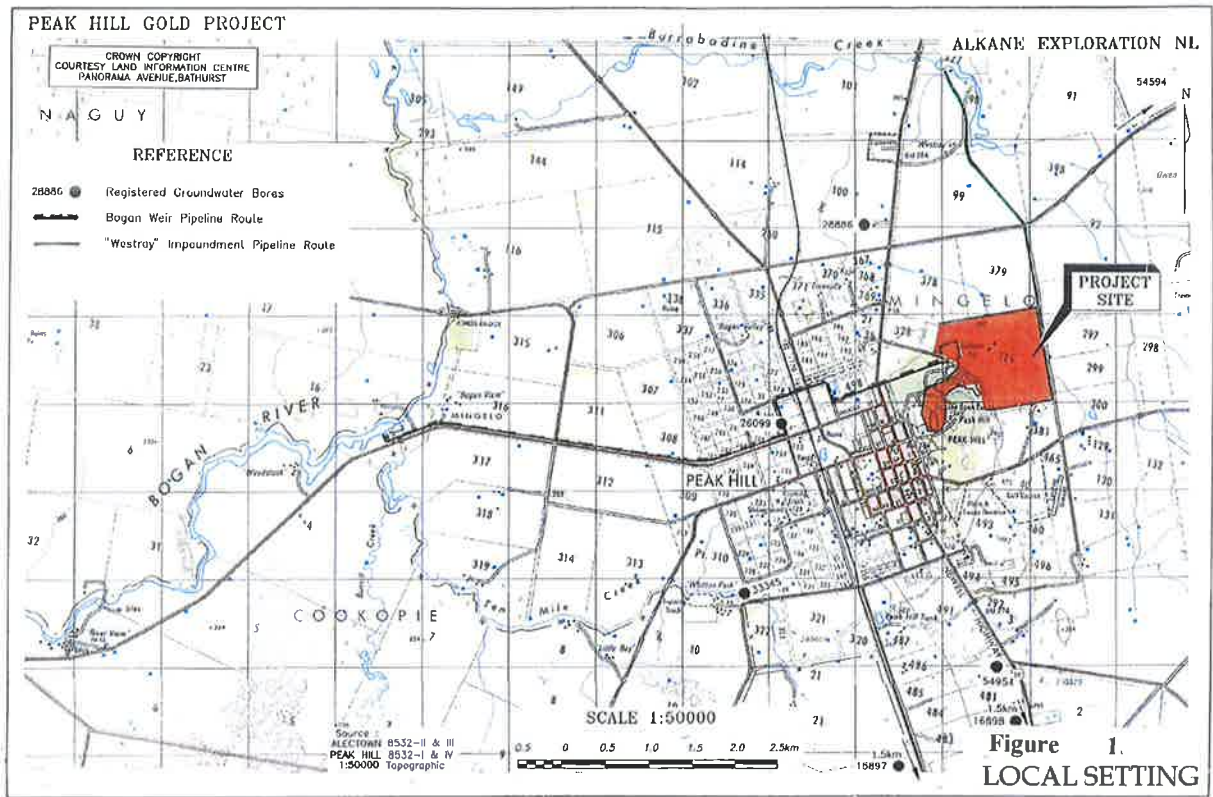
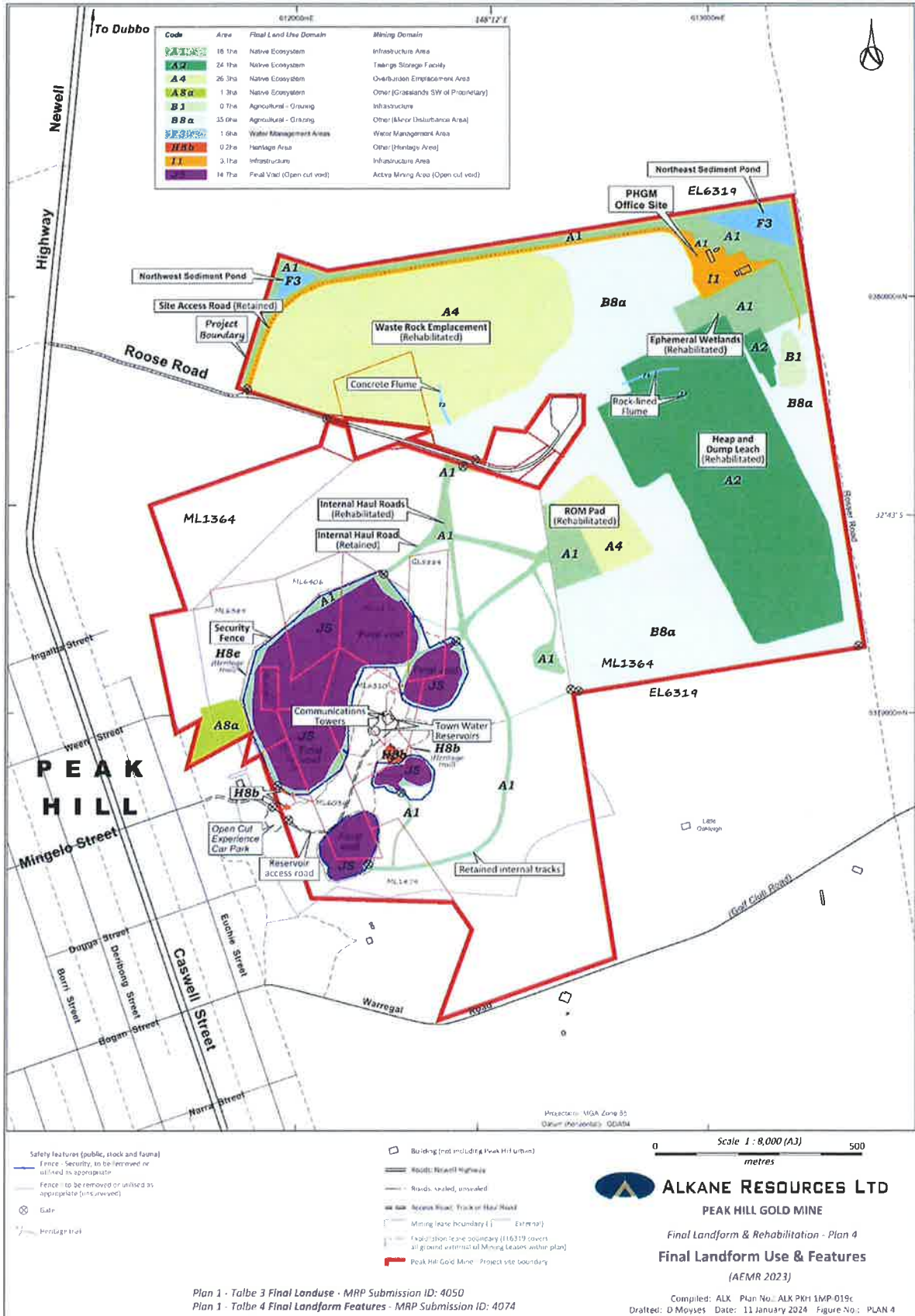


Figure 2: Peak Hill Gold Mine Local Setting (source: EIS 1993)



Plan 1: Final Landform Use & Features (from RMP 2023)

1.2. CURRENT CONSENTS, AUTHORISATIONS AND LICENSES

Table 1: Presents the consents, authorisations and licences held in relation to the Mine

Number	Granted by	Grant Date	Expiry Date	Purpose
Development Consent				
DA 648/93	Parkes Shire Council	3 Sep 1993	Replaced by DA 15039	Development Consent – Open Cut Gold Mine and heap leach gold extraction plant
DA 648/93	Parkes Shire Council	16 Aug 1994	Replaced by DA 15039	Modification of Development Consent (Parkers Extension)
DA 1033/97	Parkes Shire Council	15 Jul 1997	-	Extension of Processing Operations
DA 1049/97	Parkes Shire Council	5 Aug 1997	-	Garth Bore Pipeline
DA 1080/97	Parkes Shire Council	6 Feb 1998	-	Main Tailings
DA 99253	Parkes Shire Council	1 Feb 2000	-	Great Eastern
DA 99253	Parkes Shire Council	20 Apr 2000	-	Modification of Development Consent (Great Eastern)
DA 00174	Parkes Shire Council	8 Dec 2000	-	Bobby Burns Pit
DA 01072	Parkes Shire Council	19 Jun 2001	-	Parkers Cutback
DA 01162	Parkes Shire Council	20 Nov 2001	-	Crown Pit
DA 15039	Parkes Shire Council	25 Jun 2015	-	Retention of Mine Buildings at PHGM and supersedes DA 648/93
Subdivision Certificate 15008	Parkes Shire Council	30 Jul 2015	-	Waste Transfer Station
Mineral Authorities				
EL6319	Minister for Mineral Resources	12 Oct 2004	11 Oct 2026	Exploration Activities
GL5884		12 Dec 1969	02 Jun 2037	Mining activities at the Peak Hill Gold Mine
ML1351		15 Jun 1994	24 Sep 2036	
ML1364		14 Mar 1995	25 Dec 2035	
ML1479		18 Jan 2001	17 Jan 2043	
ML6036		07 Mar 1968	02 Jun 2037	
ML6042		21 Feb 1968	02 Jun 2037	
ML6277		12 Mar 1971	02 Jun 2037	
ML6310		27 Aug 1971	02 Jun 2037	
ML6389		06 Apr 1973	02 Jun 2037	
ML6406		25 Jan 1974	13 Feb 2037	
Number		Granted by	Grant Date	
Licences - Environmental				
EPL5473	Environment Protection Authority	5 Sep 1999	Renewed annually	Regulation of noise, dust and water emissions from the Mine Site.
		7 Nov 2003	NA	Notice of Variation of Licence
		28 Jan 2011	NA	Licence varied by correction to DECCW region record
		17 Jun 2014	NA	Licence variation 1505946
		3 Dec 2018	NA	Licence Variation (reflecting excision of 4Ha of ML1364)
Licence RN 643706	Crown Lands	15 Jul 2024	NA	Licence for pipeline and pump site
WAL 34968	NSW Office of Water	1993	NA	300ML Water Access Licence – Bogan Weir

Source: Alkane Resources Ltd

1.3. LAND OWNERSHIP AND LAND USE

Plan 1A provides an aerial photo of the Mine Site and its surrounds. Land uses within and surrounding the Mine Site include the following:

- Urban residential and rural residential;
- Agriculture and native ecosystem;
- Transportation (Newell Highway);
- Water Supply Infrastructure on Peak Hill, Reservoir access road, communications towers, rising and gravity water mains;
- Peak Hill Solid Waste Transfer Station off Roose Road (Lot 80 DP1215579);
- Commercial main street of Peak Hill;
- Recreation (Open Cut Experience – walking trails and interpretive signs);
- Former mining operations – four mine voids plus historic Crown workings and alluvial mine workings; and
- Bushland biodiversity owned by Peak Hill Local Aboriginal Lands Council.

1.3.1. Community Consultation

Consultation was undertaken with the local community, indigenous representatives and relevant government agencies throughout the operating life of the Peak Hill Gold Mine and during mine closure planning.

Establishing a tourism asset, post mine closure, was a voluntary commitment made by Alkane Resources as a demonstration of its commitment to sustainable development. The community has been keen to have continued access to the mining leases on the hill post mine closure.

The former Tourist Mine, operated as the *Open Cut Experience*, attracted 11,000 visitors in 2003.

Alkane has met with Peak Hill Local Aboriginal Lands Council during the reporting period to discuss potential underground resources at Peak Hill and the Tomingley Gold Extension Project.

Alkane was an active participant in a *Back to Peak Hill Weekend* 17-19 March 2023 by hosting bus tours to the mine site. Alkane also refurbished 20 interpretive signs around the Open Cut Experience in time for the influx of visitors at the weekend and for tourists since.

Alkane has consulted with the Peak Hill Local Aboriginal Lands Council regarding trespassers cutting fences and dumping rubbish on PHLALC land adjoining the mining lease.

In 2025 Alkane surveyed and erected new fencing along the PHLALC's southern boundary with Golf Club Road.

1.3.2. Government Agency Consultation

The following government agencies were consulted during the preparation of the RMP:

- NSW Resources (Resources Regulator)
- Environment Protection Authority.
- Parkes Shire Council.

The EPA issued a licence variation for the Peak Hill Gold Mine (EPL5473) on 3 December 2018. The variation was simply a slight change to the premises identification.

The Resources Regulator issued an improvement Notice regarding of the Open Cut Experience Emergency Management Plan on 19 January 2022 and a second improvement notice on 11 February 2022 regarding the Safety Management System for the PHGM.

During 2022 Alkane engaged a consultant and completed a thorough revision of the Health and Safety Management System to cover the mine site (including Open Cut Experience) and exploration activities on the exploration tenements.

The Resources Regulator reviewed the work completed on the HSMS on site on 19 October 2022.

In July 2022, Michael Sutherland was nominated Quarry Manager for PHGM site (as a competent person).

The Resources Regulator was on site 9 August 2024 to conduct a Targeted Assessment Plan Re-vegetation TAP.

Discussion was held regarding the planned treatment of approximately 1 hectares of bare/scalded patches on the final landforms. These scalds have been created by small amounts of sulphidic material that have been mixed with benign oxide waste and ores during the mining and rehabilitation earthworks (1996-2002).

The proposed re-establishment of more suitable growth media will be undertaken in 2027 once the Newell Highway realignment is completed as part of the Tomingley Gold Extension Project. Some of the best soils have been stockpiled on Old Thornycroft for use at PHGM

The Regulator requires Alkane to include a schedule of outstanding remediation works to be included in the Forward Program which is due 1 March 2026.

The Resources Regulator was on site 2 July 2025 as part of a Planned Inspection Program - Rehabilitation As Soon As Reasonably Practicable (ASARP). Observations and recommendations are contained in Appendix 2 – Correspondence.

On 3 December 2025 the Resources Regulator was on site to carry out a Safety Inspection of the Open Cut Experience steel structures. A notice was issued to Alkane to have the steel structures (Viewing Platform, bridge over the Crown Workings) assessed by a suitably qualified Engineer.

2. MINING ACTIVITIES

2.1. PROJECT DESCRIPTION

The Peak Hill Gold Mine includes the following components (**Plan 2**).

- Mine site access road (off Roose Road).
- Three-bedroom transportable house with carport (ultimately to be removed).
- Mine site office, crib room, workshop steel shed (slab floor), small storage shed for maintenance equipment (on former lab slab).
- Core shed, sea containers (exploration access and continuing use).
- Five HDPE lined ponds (awaiting re-use or final rehabilitation).
- Rehabilitated Final Landforms (waste rock emplacement, heap leach, haul roads (excluding pit access and firebreaks) and ROM Pad).
- Open cut voids (fenced):
 - Proprietary and Parkers Open Cut (including Parkers Cut Back);
 - Great Eastern Open Cut;
 - Crown Open Cut;
 - Bobby Burns Open Cut (partially back filled); and
 - Historic (1890-1915) Crown Workings and alluvial workings (fenced).
- Bobby Burns to Proprietary Haul Road (fire break).
- Buried water pipelines from “Westray”, the Bogan Weir and Peak Hill Sewage Treatment Works. A 63mm buried potable water line runs from the PSC reservoir to site office and core yard.
- A transformer and electrical distribution network within the Mine Site.
- Grassed waterways and sediment ponds in the northeast and northwest corners of the mine site.
- Three groundwater monitoring bores around the northeastern perimeter of the mine site.
- Steel viewing platform, steel bridge over Crown workings and steel and timber entry shelter and 22 interpretive signs around the Open Cut Experience.

Parkes Shire Council and NSW Government provided additional built infrastructure to the Tourist Mine during 2016 to enhance the visitor experience. Additional improvements – a large, fabricated gateway/shelter/water bubbler, interpretive signs and two bronze sculptures and a sound post were installed by PSC in 2017. These improvements were officially opened by the Minister for Tourism, the Hon Adam Marshall on 11 August 2017.

The Bogan River water pipeline was replaced in the Peak Hill-Narromine rail corridor by ARTC for the Inland Rail Project. The pipeline was upgraded to meet Inland Rail construction standards in the rail corridor. The Bogan weir pump was reactivated during 2020 but pumped just 3.5ML to the northeast sediment pond in 2025.

Though no biodiversity offsetting was required for the Mine Site, it should be noted that the development of PHGM has resulted in significant benefits to biodiversity within and in the vicinity of the Mine Site. By restricting unlawful access to existing areas of remnant and regrowth native vegetation, as well as regular pest and weed monitoring and maintenance programs, ongoing management of the Mine Site directly and indirectly benefits the existing biodiversity. In addition, the rehabilitation of various areas of the Mine Site and establishment of mixed native and exotic plant communities has further increased the overall biodiversity of the Mine Site.

Table 2 below details the mining domains within the Mine Site, their size and major assets contained. Note that the areas detailed are based on maximum disturbance within the term of the RMP. A more detailed description of each domain is provided in the RMP (2023).

Table 2: Major Assets per Domain

Mining Domain	Size (approx. ha)	Assets	Use & Details
1 - Infrastructure Area	19.2	<p>Roads: site access.</p> <p>Buildings: Including site office, house, crib room and amenities.</p> <p>Processing: Including shed, wet plant slab and man-proof fencing 5 HDPE-lined ponds (processing and overflow).</p> <p>Ancillary Infrastructure: growth medium stockpile</p> <p>A subdivision of 4 hectares of land from Lot 380 with former contractor infrastructure on it was approved by PSC and subsequently gifted by Alkane to PSC for use as a waste transfer station. A part cancellation (4Ha) of the Mining Lease 1364 took effect from 26 June 2017.</p>	<p>Roads provide access to open cuts, site entry and inspection to site areas.</p> <p>Buildings still in use and maintained.</p> <p>Wet plant structures removed from site in 2010 and only slab remains.</p> <p>Processing ponds contain rainwater and pumped Bogan River water which evaporates during the year.</p> <p>Approximately 2,250m³ stockpiled growth medium approximately 0.7ha</p>
2 – Tailings Storage Facility	24.1	<p>5Mt of heap and dump leach (spent ore) contoured to direct runoff to a downslope rock-lined flume.</p> <p>Includes 0.6Ha dump leach trial area.</p> <p>The crushed ore in the heap leach does have some commercial value as construction material. RMS used spent heap leach material for shoulder widening on Newell Highway in 1999.</p>	<p>Rehabilitated as a final landform. Well grassed with mixed pasture sward. Some natural regeneration of trees and shrubs.</p> <p>Top-dressed with Ag lime (2t/Ha in April 2022).</p>

3 - Water Management Area	1.6	Includes two sedimentation ponds, a farm dam near former contractor's area and grassed table drains and waterways.	Table drains and grassed waterways are designed to manage rainfall run-off.
4 - Overburden Emplacement Area (Waste Rock Emplacement and ROM pad)	26.3	5 Mt of waste rock including 815,000 tonnes of sulphidic material (>1 g Au/t) which is encapsulated in oxide waste rock (<0.5g Au/t). Includes 4.5Ha Rom pad constructed from oxidised waste rock.	Shaped and rehabilitated WRE has maximum height of 25m and heap leach has a maximum height of 20m. Top-dressed with Ag lime (2t/Ha in April 2022)
5 – Active Mining Area (Open Cut Void)	14.7	Includes four voids at the end of the MOP period.	Part of visitor experience (walking trails and interpretive signs) attractions. Natural regeneration and mine openings provide habitat for bats, birds and possums. Used for commercial photography.
8 - Other – Minor Disturbance Area	35.0	Areas largely undisturbed by mining (49Ha) Grazing licence as part of "Little Oakleigh" Lease (8 Ha).	Biodiversity and Agriculture (grazing).
8 – Other – Rehabilitation Area	1.3	Areas of historical mining disturbance (not associated with PHGM) that were rehabilitated by PHGM. Also includes areas used for exploration drilling in 2018-19 and subsequently rehabilitated.	Biodiversity and conservation.
<p>Note: The WRE extends across 2.65Ha of Lot 326 which was used as a solid waste Depot by Parkes Shire Council up until 2017. This facility has been replaced by 4Ha of land subdivided from Lot 380. Source: Alkane Resources Ltd</p>			

2.2. ACTIVITIES OVER THE RMP TERM

2.2.1. Exploration

The primary activity at the Peak Hill Gold Mine was the continuing use as the exploration base for the Tomingley Gold Extension Project (TGEP) which is a State Significant Development (SSD-9176045) approved in February 2023. TGEP will extend the life of Tomingley Gold Operations for at least ten years with the San Antonio Roswell Open Cut and underground mine commencing construction post approval.

Regional exploration activity (around Tomingley and Peak Hill) will continue during 2026. Exploration personnel will continue to access the core yard and site offices as part of their normal activities.

A drone magnetic survey was conducted in October 2025.

An Ambient Noise Tomography (passive seismic) survey was undertaken across Peak Hill during 2022 which indicated a potential drill target at around 1km depth below the Great Eastern and Proprietary pits.

The Peak Hill Gold Mine MLs contain a known sulphide resource totalling 4.91Mt grading at 2.05g/t Au and 0.17%Cu (1.0g/t Au cut off).

Future exploration activities may include the following:

- Geochemical sampling;
- Geological mapping;
- Geophysics; and
- Diamond and Reverse Circulation resource and geotech drilling.

The objective of the recent PHGM exploration programs (since 2018) has been to further define the known resource, as well as identify additional resources within the Mine Site. Metallurgical test work on the core and resource evaluation continues.

In 2025 an honours research project looked at previous drilling and pit observations to confirm the potential for a porphyry source of the gold at Peak Hill.

Alkane is proposing a deep diamond hole in February 2026 to test the geology below the Great Eastern and Proprietary pits.

Environmental management of exploration activities will continue to be implemented to ensure the final rehabilitation of the exploration areas is consistent with the rehabilitation objectives identified in Section 5.2 of this document.

2.2.2. Construction

No construction took place during the reporting period.

Alkane maintains the Mining Leases at Peak Hill to allow for future potential underground mining.

Processing of any ore would likely take place at Tomingley Gold Operations. That would require a new development application and associated environmental assessment.

2.2.3. Mining Operations during the Reporting period

No mining was undertaken on the PHGM MLs during the 2021 reporting period (1 January 2025 - 31 December 2025).

Additional safety signage was installed around the Open Cut Experience voids in December 2025.

There are no plans to disturb previously rehabilitated areas during the MOP period (other than potential remediation of small, scalded patches on the final landforms).

There has been no land clearing, construction activity, ore extraction nor mineral processing during 2025.

2.3. REHABILITATION DURING THE AEMR PERIOD

There have been few active interventions on the mine site since the commencement of the RMP as most of the site was rehabilitated by 2005.

In March 2020, exploration samples bags that had been temporarily stored south of the intermediate pond were removed from site and the area above the trial dump leach site was covered with fresh topsoil.

On 7 April 2021, 108 tonnes of agricultural lime was spread across the heap leach and WRE final landforms (46Ha) at a rate of approximately 2t/Ha. While the pasture cover is generally excellent, it was expected that the addition of lime would shrink some of the bare patches on the final landforms. Bare patches are also a feature on surrounding agricultural land (not owned by Alkane).

Boxthorn, Prickly Pear (and other minor cacti) and other noxious weeds were controlled through spraying by the Site Supervisor. A patch of St John's Wort (*Hypericum perforatum*) was identified grown in a 400m square patch east of the PSC waste transfer station. This weed was sprayed during flowering and the location will be monitoring annually for follow-up eradication. This weed has proliferated across the Central West in 2022. Excessive macropod numbers were controlled under licence from EES by a licenced professional shooter.

The site continues to develop more ecological complexity each year as trees planted in 1996 are producing habitat for birds and other vertebrates and seed for new generations of trees.

The 2020-2024 calendar years saw above average and timely rainfall which resulted in several of the best consecutive cropping and pasture seasons ever experienced in the district. In 2023 the annual rainfall at was just below the mean with a relatively poor season but 2024 saw the rainfall total 7.25.4mm (well above average once again).

Groundcover on the mine site is generally of superior quality than surrounding farmland. Trees and shrubs (self-sown) on the batters of the WRE were cut to maintain ground cover and protect buried sulphides.

While Alkane was unable to spread any fresh topsoil across some of the scalded patches, 105 tonnes of ag lime was spread across the heap leach and WRE landforms in June 2025.

2.3.1. Further Development of Final Rehabilitation Plan (Sep 2023)

A Forward Program (2023-2025), Rehabilitation Objectives and Final Landform Plan was submitted to the Resources Regulator during the 2023 period. An updated Forward Program will be submitted by 1 March 2026.

A DA was approved by Parkes Council in 2016 to allow for the retention of the mine buildings (except the house) on site.

A DA was approved by Parkes Council for the subdivision of four hectares of land from Lot 380 for use as a new solid waste transfer station. This land was transferred at no cost to council to satisfy consent condition 1.25 of Consent 648/93.

The new Peak Hill Waste Transfer Station which has recycled the contractor's area (workshop shed, slab and washdown bay) opened for operations in 2018.

Alkane submitted a part relinquishment application to DRE on 6 November 2015 to excise the 4 hectares from the mining lease. Alkane received confirmation of the part cancellation on 26 June 2017.

Subsequent to further exploration success at PHGM, Alkane would consult with NSW Resources and DPE regarding the potential to re-open the Peak Hill Gold Mine as an underground mine. Those discussions and feasibility study results will determine whether the mine proceeds to final closure or works towards the approval of a new development.

Some of the remaining infrastructure on site would be utilised in any new development.

Table 3 presents the predicted cumulative disturbance and rehabilitation progression in accordance with the first Forward Program submitted for the PHGM in accordance with Clause 13(1) of Schedule 8A of the *Mining Regulation 2016*.

During the next reporting period, the second Annual Rehabilitation Report for the PHGM will be prepared. A summary of the information presented in that Report will be included as part of each successive AEMR.

In accordance with Clause 16 of Schedule 8A of the *Mining Regulation 2016*, the Annual Rehabilitation Report and Forward Program are publicly available on the Alkane website.

Table 3: Predicted Cumulative Disturbance and Rehabilitation Progression during the next Three Year Term

	Year 1	Year 2	Year 3
Total disturbance footprint – surface disturbance (ha)	122.9	122.9	122.9
Underground mining area (ha)	0	0	0
Total active disturbance (ha)	19.2	19.2	19.2
Rehabilitation – land preparation (ha)	0	1.0	0
Ecosystem and land use establishment (ha)	0	0	0

Table 4: Maintenance Activities on Rehabilitated Land
(This period's activities and activities proposed in the next reporting period)

NATURE OF TREATMENT	Area Treated (ha)		Comment/control strategies/ treatment detail
	Report period	Next period	
Additional erosion control works (drains re-contouring, rock protection)	0	0	
Re-covering (detail - further topsoil, subsoil sealing etc)	0	0	Fresh topsoil, biochar and compost trials will be conducted on areas of scald exhibiting on the final landforms in 2024 or 2025 (dependent on the availability of fresh topsoil from TGEF).
Soil treatment (detail - fertiliser, lime, gypsum etc)	0	1.0	108 tonnes of agricultural lime was applied to the WRE and heap leach final landforms in April 2021. An additional 105 tonnes of ag lime was spread across the final landforms in June 2025.
Treatment/Management (detail - grazing, cropping, slashing etc)	0	0	
Re-seeding/Replanting (detail - species density, season etc)	0	1.0	Trial treatment areas will be seeded with a mixture of native and introduced perennial and annual species (similar to what was originally seeded and has proved successful).
Adversely Affected by Weeds (detail - type and treatment)	194.8	194.8	Boxthorn, Bathurst burr, Devils Claw, Fierce thornapple, Prickly Pear, St Johns Wort. Spot spraying with glyphosate and wetter. St. Barnaby's Thistle was eradicated from site. Spray and/or chip to remove.
Feral animal control (detail - additional fencing, trapping, baiting etc)	100	100	Macropod reduction under licence on Lot 81 only.

3. METEOROLOGICAL DATA

The Peak Hill Gold Mine no longer maintains a weather station at the mine site but rather relies on the registered BOM site (ID 050031) at Peak Hill Post Office (within 500m of the site).

In 2019 the total rainfall for New South Wales was the lowest on record, at 55% below average; well below the previous driest year of 1944.

2019 was the warmest year on record for New South Wales as a whole, with the mean temperature 1.95 °C above average and 0.27 °C warmer than the previous warmest, 2018.

The five warmest years on record for New South Wales are now 2019, 2018, 2014, 2017 and 2009.

The Peak Hill Post Office mean annual rainfall is 563.2mm. The total rainfall at Peak Hill Post Office in 2022 was 1099.6mm (almost double the annual mean). In 2023 the annual rainfall at 523mm was just below the mean. However, in 2024 the total rainfall was well above the mean once again at 725.4mm. Only September and October 2024 saw monthly tallies dip below the mean.

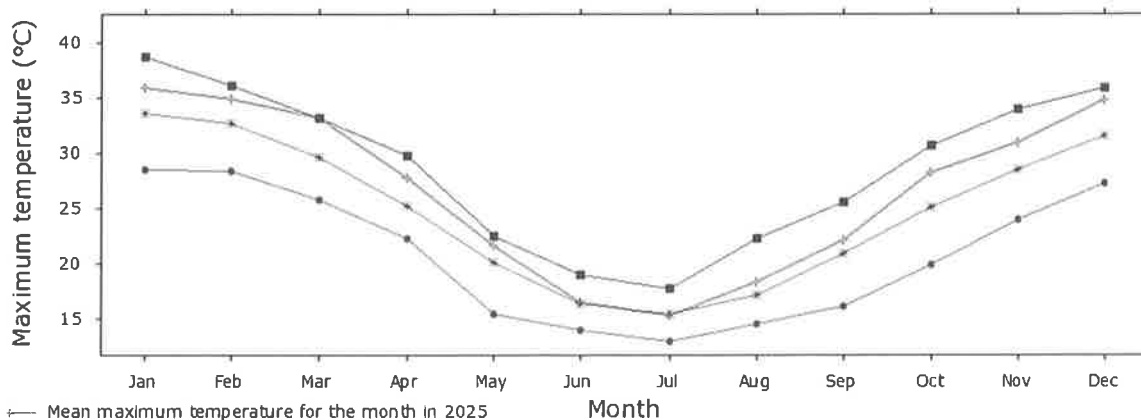
Rainfall for 2025 totalled 425.6mm which is 75% of mean annual rainfall for Peak Hill.

The mine site rehabilitation performed as designed and no damage (other than localised scalds) has been observed on any of the final landforms.

The northeast sediment pond did not overflow dry at the end of 2025 with the district suffering drought conditions and district lack of rainfall runoff events.

The charts below contain maximum and minimum temperatures for 2025 versus the long term mean and daily and monthly rainfall data for 2025.

Peak Hill Post Office (050031) 2025 maximum temperature

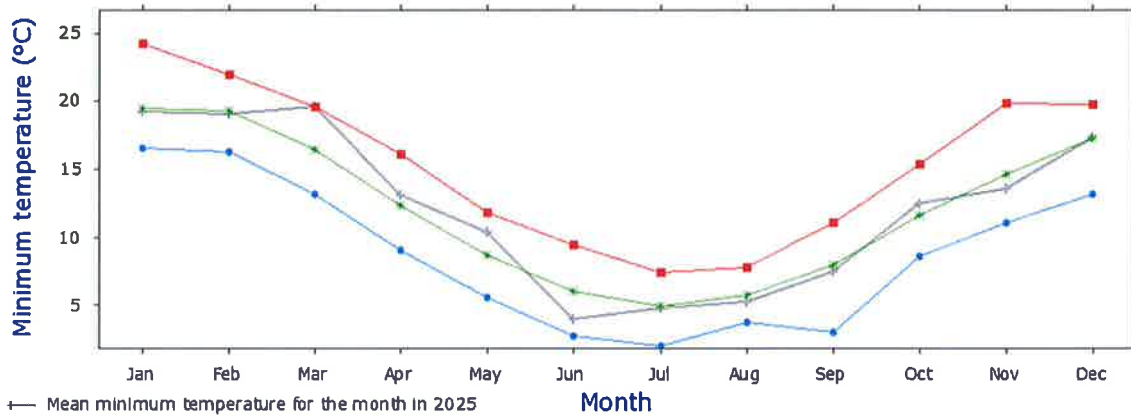


+ Mean maximum temperature for the month in 2025
 * Mean maximum temperature over all years
 ■ Highest monthly mean maximum temperature over all years
 ● Lowest monthly mean maximum temperature over all years
 x No data
 Note: Data may not have completed quality control
 Observations made before 1910 may have used non-standard equipment

Climate Data Online, Bureau of Meteorology
Copyright Commonwealth of Australia, 2026

Product Code: IDCJAC0010

Peak Hill Post Office (050031) 2025 minimum temperature



+ Mean minimum temperature for the month in 2025
 * Mean minimum temperature over all years
 ■ Highest monthly mean minimum temperature over all years
 ● Lowest monthly mean minimum temperature over all years
 × No data
 Note: Data may not have completed quality control
 Observations made before 1910 may have used non-standard equipment
 Product Code: IDCJAC0011

Climate Data Online, Bureau of Meteorology
Copyright Commonwealth of Australia, 2026

Summary statistics for all years

Move mouse over highest and lowest daily temperature to view dates.

Statistic	Jan	Feb	Mar	Apr	May	Jun	Jul	Aug	Sep	Oct	Nov	Dec
Mean	33.6	32.7	29.6	25.2	20.1	16.3	15.4	17.2	20.9	25.1	28.5	31.6
Highest monthly mean	38.7	36.1	33.2	29.8	22.5	19.0	17.7	22.2	25.6	30.6	33.9	35.9
Lowest monthly mean	28.5	28.4	25.8	22.2	15.4	14.0	13.0	14.5	16.1	19.9	24.0	27.3
Highest Daily	45.8	46.0	40.0	36.0	28.2	24.7	23.4	28.4	35.9	39.0	43.8	45.5
Lowest Daily	18.7	18.4	15.1	12.0	8.2	7.0	4.3	7.3	9.4	10.7	11.0	15.1

Daily rainfall

Peak Hill Post Office

2025	Jan	Feb	Mar	Apr	May	Jun	Jul	Aug	Sep	Oct	Nov	Dec
Graph												
1st	0	0	0	0	0.8	0	0	0.2	0	0	0	0
2nd	0	0	0	0	0	0	0.4	0	0	0	0	11.4
3rd	0	0	0	0	0	19.6	0	0	0	0	0	0
4th	0	0	0	0	0	0.4	0.2	0	0	0	7.6	0
5th	0	0	0	0	0	0	0	0	0	0	0	0
6th	0	0.4	0	0	0	0	0	0	0	0	0	0
7th	4.4	0	0	0	0	0	0.4	0	0	0	0	1.8
8th	33.0	0	0	0	0	0	0	0	0	0	0	0
9th	0	0	0	0	0	0	0	0.6	0	0.6	0	0
10th	0	0.4	0	0	0	1.8	0	0	61.8	0.2	0	0
11th	0	7.0	0	0	0	0.4	0	0.8	24.0	0	0	0
12th	0	0	0	0	0	0.2	0	0	0	0	0	0
13th	3.4	0	0	0	0	0	0	1.0	0	3.2	0	0
14th	0	0	0	0	0	0	0	0.4	0	0	0	0
15th	0	0	0	0	4.6	0	3.0	0	0	0	0	3.8
16th	1.0	0	0	0	0	0	0.2	0	0	0	0	0
17th	0	0	0	0	0	0	0	0	6.0	0.6	2.0	0
18th	0	0	0	0	0	0	0	0	0.4	0	0	0
19th	0	0	0	0	0	0	0	0	0	0	0	0
20th	0	0	0.6	0	0	0	0	0	6.0	0	0	0.4
21st	0	0	38.0	0	0.6	0	0	8.4	0	0	0	0
22nd	0	0	0.8	0.2	10.6	0	0	0	0	3.0	0	17.0
23rd	0	0	0	0	8.6	0	13.0	0	0	0.2	0.8	0
24th	0	0	0	0	0.2	16.4	0	0	0	0	0	0
25th	0	0	0	0	0	0.2	0	0	0	0	0	0
26th	0	0	0	0	0.4	1.8	7.0	0	0	0	0	0
27th	0	0.4	0	0	11.0	0	4.2	0	0	1.0	1.0	0
28th	0	0	0	45.8	2.0	0	2.6	1.4	0	0.6	0	0
29th	0	0	0	0	0	0	0	0	0	1.4	0	0
30th	0	0	0	0	0	0	2.4	1.4	0	0	0	0
31st	0	0	4.0	0	0	0	4.2	0	0	0	0	0
Highest Daily	33.0	7.0	38.0	0.0	11.0	19.6	13.0	8.4	61.8	3.2	7.6	17.0
Monthly Total	41.8	8.2	43.4	46.0	38.8	40.8	37.6	14.2	96.2	10.8	11.4	34.4

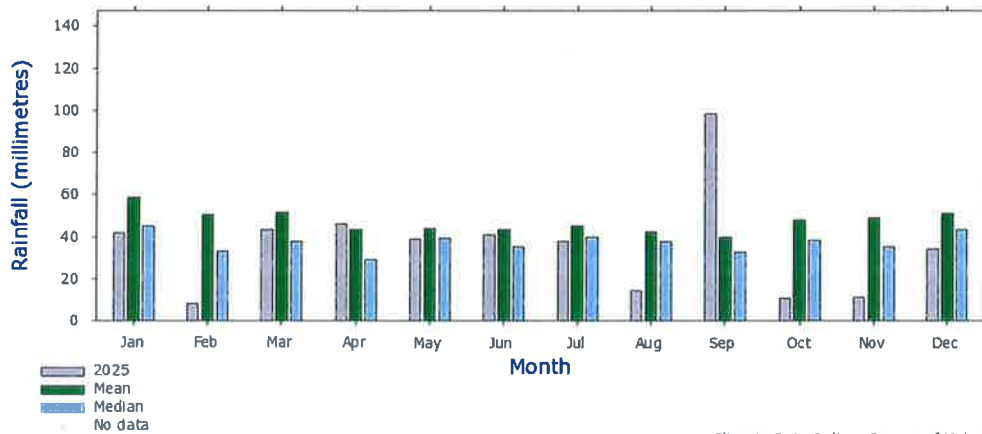
Annual total for 2025 = 425.6 mm | [View all monthly data](#) | [Plot year of daily data](#)

Summary statistics for all years

[Move mouse over highest daily rainfall to view dates.](#)

Statistic	Jan	Feb	Mar	Apr	May	Jun	Jul	Aug	Sep	Oct	Nov	Dec
Mean	58.6	50.5	51.7	43.3	44.0	43.3	45.0	42.3	39.7	47.7	48.7	51.2
Median	44.8	33.2	37.6	29.0	39.2	35.0	39.8	37.5	32.6	38.3	35.2	43.2
Highest Daily	120.7	133.9	116.8	105.4	89.2	123.2	55.6	60.5	61.8	71.4	60.2	88.0

Peak Hill Post Office (050031) 2025 Rainfall (millimetres)



Note: Data may not have completed quality control
Product Code: IDCJAC0009

Climate Data Online, Bureau of Meteorology
Copyright Commonwealth of Australia, 2026

4. ENVIRONMENTAL PERFORMANCE

Environmental control strategies (rehabilitation) have previously been undertaken as described in the MOP 2014-2022.

A Rehabilitation Management Plan and Forward Program will guide rehabilitation actions towards final landform and land use.

However, final rehabilitation of site will not occur while there is still potential to develop the underground resource at Peak Hill.

Three Landscape Function Analysis studies (14 transects across final landforms and two analogue site) have been undertaken to date by Graminus Consulting on August 2013, February 2014 and May 2014.

The analogue sites have not been disturbed by mining. Significantly “neither analogue site is any better or worse than any other transect”. The metric scores (May 2014) for stability, infiltration and nutrient cycling endorse a positive outcome for the rehabilitation techniques employed on the minesite.

Surface water discharges (results reported on www.alkane.com.au) from the licenced discharge point (NE sediment pond) comply with EPA limits. Despite almost double Peak Hill average rainfall in 2022 there were only three surface water discharges from the site.

PHGM NE Sed Pond SW Sampling Results - 2022				
Sampling date	LAB ID	pH	O&G	BOD
06-May-22	ES2216251	7.53	<5	2
09-Sep-22	ES2233121	7.81	<5	5
14-Nov-22	ES2241434	7.63	<5	3

There were no surface water discharges in 2025.

This is an indication of the good groundcover across the minesite and generally healthy soils (landscape function) being able to absorb rainfall events. The scalded patches are the exception and they represent a very small area (less than one hectare) of the total revegetation effort. Trials will be conducted in the next two periods to remediate the scalds. Fresh topsoil will be stripped during the Newell Highway realignment at TGEP and transported to PHGM for spreading on scalded areas.

Boxthorn spraying is getting on top of the infestation with a decline in recruitment evident.

Macropod management is ongoing to ensure landforms are not overgrazed.

Photographs of the mine site exploration and rehabilitation progress are contained in Appendix I.

5. COMPLAINTS AND LIAISON

There were no complaints received by Alkane relating to the Peak Hill Gold Mine during the reporting period.

Alkane has held discussions with Peak Hill Local Aboriginal Lands Council during the period about illegal dumping of rubbish and illegal prospecting on their land adjoining the mining leases.

Alkane completes an annual return for the EPA and that is posted on the Company website.

APPENDIX 1- PHOTOGRAPHS



Photo 1: Northeast sediment pond rapidly drying. Photo taken 4 February 2025.



Photo 2: Overflow pond empty as of 4 February 2025.



Photo 3: Pregnant overflow pond status 4 February 2025. Wildlife egress ramp mid-image.



Photo 4: Pregnant pond containing remnant Bogan River water. Photo taken 4 Feb 2025.



Photo 5: Intermediate pond supporting self-seeded Cumbungi (*Typha orientalis*).



Photo 6: Resources Regular inspection 4 July 2025. View from heap leach looking northeast over process ponds and site buildings.



Photo 7: Narromine Clontarf Academy students learning about gold mining at the Open Cut Experience 30 October 2025.



Photo 8: 105 tonnes of Ag lime from Parkes was delivered to site and spread on the heap leach and WRE in July 2025.



Photo 9: Dubbo Field Naturalist & Conservation Society took a field trip to TGO rehab plantings and the Open Cut Experience on 24 August 2025.



Photo 10: Great Eastern Open Cut natural regeneration. Photo taken 1 December 2025.



Photo 11: Resources Regulator undertaking a safety inspection of the OCE. Observing a water leak from the PSC reservoirs. Photo taken 1 December 2025.



Photo 12: A pair of carpet pythons (*Morelia spilota*) mating beside the OCE walking trail. landform downslope drain. Photo taken 30 October 2025.



Plate 13: Alkane had a presence at the Peak Hill Show 19-20 August 2025. The General Manager NSW officially opened the Peak Hill Show, TGO staff exhibited (and won prizes) and exploration staff provided geological knowledge to anyone interested.

APPENDIX 2- CORRESPONDENCE

Alkane Resources Ltd
PO BOX 768
WEST PERTH WA 6872
Attn: Michael Sutherland

By email: mike.sutherland@alkane.com.au

Dear Michael Sutherland

Peak Hill Gold Mine (GL 5884, ML 6036, ML 6042, ML 6277, ML 6310, ML 6389, ML 6406, ML1351, ML 1364, ML 1479)

Planned Inspection Program – Rehabilitation As Soon As Reasonably Practicable (ASARP)

Overview

The NSW Resources Regulator (the Regulator) within the Department of Primary Industries and Regional Development is responsible for the administration and enforcement of the Mining Act 1992 (the Act) and associated Regulations.

Our compliance and enforcement strategy includes planned inspection programs (PIPs) at mines across NSW to ensure measures have been identified and implemented to facilitate sustainable rehabilitation outcomes. One of the primary aims of the PIP is to assist industry with continual improvement in rehabilitation outcomes.

Further information regarding the regulatory system for the rehabilitation of mines can be found at <https://www.resourcesregulator.nsw.gov.au/rehabilitation/mine-rehabilitation>

Scope of assessment

On 2nd July 2025, a PIP was conducted at Peak Hill Gold Mine (the mine). The assessment focused on whether rehabilitation is occurring as soon as reasonably practicable (ASARP) after surface disturbance, as required by clause 5 in Schedule 8A of Mining Regulation 2016.

The entire mine complex was not inspected and as such the observations outlined below do not reflect compliance or otherwise with the Act, the Mining Regulation 2016, the conditions of authorisation or relevant approvals granted by the Department.

Observations:

Based on discussions held with mine personnel, review of submitted documentation, and field inspections conducted as part of the regulatory assessment, the following key observations were made:

- **Rehabilitation Management Plan (RMP)** – Rehabilitation across the site is largely complete, with most areas now in the Ecosystem and Land Use Development Phase. Opportunities for further rehabilitation are limited, with the Processing and Overflow Ponds identified as the primary focus during the initial five-year period (2022–2026). This timeline may be extended depending on future mine development requirements. The Life of Mine Schedule outlines a gradual rehabilitation trajectory; however, substantial rehabilitation efforts are currently confined to the ponds, with minimal activity elsewhere due to ongoing operational constraints.

The RMP has been formatted in accordance with regulatory requirements and is publicly available on the company website.

- **Measuring performance against rehabilitation objectives and rehabilitation completion criteria** - Previous monitoring conducted during 2013–2014 focused on the Waste Rock Emplacement (WRE) and Heap Leach Pad (HLP), establishing a baseline for future comparison. However, monitoring efforts have since lapsed, and there is currently no structured program in place to assess rehabilitation progress against defined objectives. Although the TARP has been completed, residual risks—such as soil scalding—continue to pose challenges for future rehabilitation, particularly within the WRE and HLP.
- **Forward Program (FWP0001549)** – The Forward Program review has highlighted that salt scalding remediation is scheduled for completion by 31 December 2026. No progress has been made to date, with the status currently listed as 'Not Started'. Furthermore, there is no rehabilitation forecast available for the site. This lack of planning is linked to the site's current position within the Ecosystem and Land Use Development Phase of rehabilitation.
- **Annual Rehabilitation Report (ARR0001418)** – The Annual Rehabilitation Report outlines remediation activities targeting salt scalding across both the WRE and HLP areas. However, during onsite discussions, it was noted that these remediation efforts are unlikely to be completed by the scheduled deadline of 31 December 2026. This anticipated delay was neither acknowledged nor explained within the report.
- **Heap Leach Pad and Waste Rock Emplacement** – During the site inspection, both HLP and the WRE were found to be stable, exhibiting generally good ground cover and effective surface water management. Grassland currently dominates the cover surface. Despite these positive observations, the 2019 Revegetation TAP identified expressions of salt through localized bare patches on both the HLP and WRE. These areas of concern remain evident, though it is noted that a remediation plan has been established to address the salt-affected zones and support ongoing rehabilitation efforts.
- **North East Sediment Pond Area** - During the inspection of the North East sediment pond area, the pond itself was observed to be dry. Adjacent to the pond, the designated biodiversity and conservation zone displayed encouraging signs of ecological health, with well-established ground cover and mature tree growth evident throughout.

Recommendations

1. **Forward Program** – the timeframes for proposed rehabilitation works, including salt scalding remediation, should be reviewed and updated where necessary in the next Forward Program. This review should consider the implications of any delays on broader rehabilitation timelines and ensure that the program remains aligned with achievable milestones and compliance with ASARP requirements.
2. **Rehabilitation Management Plan (RMP)** – It is recommended that the RMP be revised to accurately reflect the updated rehabilitation timelines for the Processing and Overflow Ponds.
3. **Annual Rehabilitation Report** – In the next Annual Rehabilitation Report submission, it is recommended to include a clear justification for the revised timeline associated with salt scalding remediation. The rationale should briefly outline contributing factors that have influenced the delay, such as operational dependencies that may have reprioritized site activities
4. **Completion Criteria – Salt Scalding Remediation** – It is recommended that, following the completion of salt scalding remediation activities on both the HLP and WRE, formal completion criteria be developed and submitted to the Regulator for assessment and verification.

Action Plan

The Resources Regulator requests that you develop an Action Plan to address the above recommendations and submit via nswresourcesregulator@service-now.com (citing reference LETT0010170) within 8 weeks of the date of this letter.

- The Action Plan should be set out in table format and include:
- Recommendation number
- Recommendation
- Actions you will undertake to address the recommendation
- Timeframe to complete the actions.

Please also ensure that your annual rehabilitation report includes an update on all actions undertaken in response to letters, notices or directions issued by the Resources Regulator (and includes the reference number of the letter/notice/direction).

The implementation of the program to address these recommendations will be subject to future Planned Inspection Program assessments and other periodic assessments undertaken by the Regulator.

Compliance monitoring

You should note that the Regulator intends to actively monitor and enforce rehabilitation obligations at the mine. Further information regarding mine rehabilitation obligations is available at <http://www.resourcesregulator.nsw.gov.au>.

If you require further information, please contact the Resources Regulator on 1300 814 609 (Option 2, then 5), or via email at nswresourcesregulator@service-now.com

If you require additional information, please contact the Resources Regulator on 1300 814 609 or via email at info@sys.resources.nsw.gov.au.

Yours sincerely,

Kate Overall
Inspector Environment
Resources Regulator

9 October 2025

Improvement Notice

Issued under section 191 of the *Work Health and Safety Act 2011*



Notice no. **NTCE0018963**

This Notice requires the person (which includes a body corporate or other entity) to whom it is issued to remedy a contravention, or take action to prevent a likely contravention, of WHS laws as defined under section 5 of the *Work Health and Safety (Mines and Petroleum Sites) Act 2013* (WHS(M&PS) Act). Section 49 of the WHS(M&PS) Act sets out additional circumstances under which a notice can be issued under section 191 of the WHS Act.

Under section 210 of the *Work Health and Safety Act 2011* (WHS Act), the person to whom an Improvement Notice is issued must as soon as possible display a copy of the notice in a prominent place at or near the workplace, or part of the workplace, at which work is being carried out that is affected by the notice. Maximum penalty of \$7,521.00 for an individual or \$37,486.00 for a body corporate. A person must not intentionally remove, destroy, damage or deface a notice displayed while the notice is in force. Maximum penalty of \$7,521.00 for an individual or \$37,486.00 for a body corporate.

Under section 193 of the WHS Act, the person to whom an Improvement Notice is issued must comply with the notice for the period specified. Maximum penalty of \$74,849.00 for an individual or \$374,369.00 for a body corporate.

Part A: Notice issued to the following person

Name of the individual or company or other entity: Alkane Resources Ltd

This notice is given to you as a person who has control over the activity that is the subject of this notice.

Part B: Workplace details

Name: Peak Hill Gold Mine

Address: Roose Road PEAK HILL NSW 2869

Workplace location to which this notice relates: Lookout into the Proprietary Open Cut and bridge, associated steel walkways and steel fencing over / near old underground workings.

Part C: Grounds for issuing

I am an inspector under the WHS Act and I issue this notice because I believe that you have contravened the following provision(s) of the WHS laws in circumstances that make it likely the contravention will continue or be repeated: Work Health and Safety Regulation 2017 (NSW) clause 37.

Work Health and Safety Regulation 2017 (NSW) clause 40 (c).

Work Health and Safety Regulation 2017 (NSW) clause 78.

Work Health and Safety Regulation 2017 (NSW) clause 213.

Part D: Description

Brief description of how the provision(s) has/have been contravened.

On the 1st of December 2025 a planned assessment focusing on the tourist areas of the Mine was conducted at the

Peak Hill Gold Mine by Inspectors Robert Jay and Michael Skeen, the following issues were identified:

2

- The steel tourist lookout into the Proprietary open cut and the steel bridge, associated steel walkways and steel fencing have not had a recent structural integrity inspection conducted.

Part E: Directions/recommendations

Directions (if any) on the measures to be taken to remedy the contravention or prevent the likely contravention, or the matters or activities causing the contravention or likely contravention, to which the notice relates.

(It is mandatory to comply with these directions)

Ensure that the regular maintenance, inspection, and if necessary, testing of the above-mentioned steel structures are carried out by a competent person.

Matters that must be considered are the identification, assessment, management, and rectification of defects that affect the safety of the structures.

Recommendations (if any). *(It is not an offence to fail to comply with recommendations in a notice)*

Refer to AS 1657:2018 Fixed platforms, walkways, stairways and ladders - Design, construction and installation.

Part F: Compliance

You are required to remedy the contravention or likely contravention or comply with this notice by: **Friday 27 Mar 2026**

Note: An inspector may, by written notice given to the person, extend the compliance period for the improvement notice, however the inspector may extend the compliance period only if the period has not ended.

Part G: Issue details

Issued by: Inspector Robert Alan Jay on Wednesday 3 Dec 2025

Service details: Via Email: mike.sutherland@alkane.com.au to Michael Sutherland

Other copies provided by email to: Michael Skeen at michael.skeen@dpird.nsw.gov.au; Alex Cherry at Alex.Cherry@alkres.com; Robert Jay at robert.jay@dpird.nsw.gov.au

Attached is an information sheet stating the effect of section 191 of the WHS Act.

Please read the following information

If you have any queries about this Notice, please contact the issuing inspector in the first instance. In relation to matters or the exercise of a power or function concerning a mining workplace or a coal workplace, the Regulator is the Secretary of the Department of Primary Industries and Regional Development.

Internal review of this decision

As the person to whom this Improvement Notice has been issued, you (or eligible persons under section 223 of the WHS Act) can apply for an internal review of this decision to the Regulator. If you wish to apply for an internal review of the notice, an application must be made before the period specified on the notice for compliance has expired or within 14 days of the Improvement Notice being issued.

The operation of the Improvement Notice is stayed (i.e. suspended) once the application for review of decision is lodged. The stay remains in effect until a decision is made and whichever of the following is earlier (1) an external review application is made; or (2) 14 days have elapsed since the person became aware of the decision of the Regulator.

How does a person apply for an internal review of a decision?

An application must:

- be made using the form Application for internal review published on the regulator's website at <https://www.resources.nsw.gov.au/resources-regulator/our-role/legislation/review-of-regulator-or-inspector-decisions>
- attach a copy of the notice for which any review is being sought
- set out clearly the reasons why the review is sought
- include your name, address and telephone number
- be sent to cau@regional.nsw.gov.au

What happens next?

Your application for internal review will be reviewed as soon as reasonably practicable and within 14 days of the application being received, unless additional information is required. You will receive written confirmation of the result of the internal review including the reasons for the decision.

External review

An eligible person may apply to the Industrial Relations Commission (Commission) for an external review of the decision made on an internal review or for a review of an Improvement Notice issued by the Regulator. An external review application must be made within 14 days of the decision first coming to the applicant's notice or, if the Regulator is required by the Commission to give the person a statement of reasons, within 14 days after the day on which the statement is provided.

Privacy

This information is collected by the Department of Primary Industries and Regional Development for the purposes of the WHS laws. The Department of Primary Industries and Regional Development will use this information for the purposes of law enforcement. This information may also be made available to other government agencies including SafeWork NSW.

Contact details for the Department of Primary Industries and Regional Development

4

Phone: 1300 814 609

Email: cau@regional.nsw.gov.au

For a full list of offices visit <https://resources.nsw.gov.au/about-us/contact>

© State of New South Wales through Department of Primary Industries and Regional Development 2024. You may copy, distribute, display, download and otherwise freely deal with this publication for any purpose, provided that you attribute the Department of Primary Industries and Regional Development as the owner. However, you must obtain permission if you wish to charge others for access to the publication (other than at cost); include the publication in advertising or a product for sale; modify the publication; or republish the publication on a website. You may freely link to the publication on a departmental website.