

# TOMINGLEY COMMUNITY NEWSLETTER



A WHOLLY OWNED SUBSIDIARY OF ALKANE RESOURCES  
ABN: 53 149 040 371



A combined Alkane team from Costerfield and Tomingley Operations participated in the annual Victorian Mine Rescue Competition.

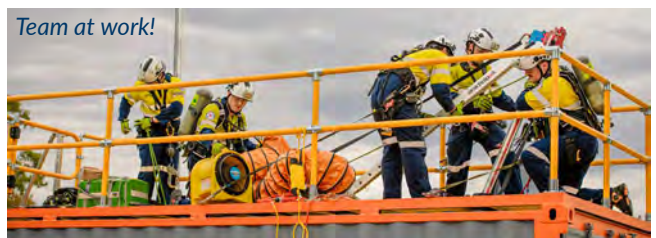
## Site News

### Tomingley & Costerfield Operations team up for mine rescue competition

Five members of the Tomingley Operations emergency response team (ERT) joined our Costerfield sister operation to compete in the annual Victorian Mine Rescue Competition (VMRC), held at Fosterville Gold Mine and La Trobe University’s Bendigo campus.

The goal of the VMRC, hosted by the Minerals Council of Australia, is to provide training in a challenging but fun environment, build team relationships, and create a forum for ERTs to meet and learn from each other. It proved an ideal opportunity for cross-fertilisation and team building between Alkane’s two Australia-based operations, which trained together for a week before the event.

Over two days (28 February to 1 March), more than 12 teams competed in nine challenging simulated emergency scenarios, including ropes rescue, HAZMAT,



Team at work!

search and rescue, firefighting, confined spaces, road crash rescue and First Aid.

CFA Oscar Brigade took out first place in the overall competition, with BHP Copper SA and Victory Minerals Ballarat placing second and third respectively.

The combined Alkane team competed valiantly, performing strongly across all scenarios and placing second in the Fire Scenario. They received excellent feedback from competition officials for their technical capability, teamwork, and professionalism and received the Most Helpful Team Award.



*A combined Alkane team from Costerfield and Tomingley Operations participated in the annual Victorian Mine Rescue Competition. (Images provided by the Minerals Council of Australia.)*

## New General Manager

Tomingley Operations has a new General Manager. Andrew Brown has been appointed to the role, after serving as our Underground Manager since July 2022.

Prior to joining Tomingley, Andrew held senior technical and production management positions at Cannington Mine in North Queensland and Cadia Valley Operations near Orange. He holds a Bachelor of Mining Engineering from the University of New South Wales.

Andrew replaces Rod Griffith, General Manager from September 2024 to January 2026, who achieved measurable improvements in safety, production and costs. We wish Rod all the best in his future endeavours.



*New General Manager Tomingley Operations, Andrew Brown*

## Road construction updates

### Newell Highway project

Construction of the new section of Newell Highway has been underway “offline” since October. The earthworks now extend for 6.5km, from Back Tomingley West Rd in the south to McNivens Lane in the north.

In early March, we completed construction of turning lanes for safer access to the Kenilworth property from the Newell Highway. Lines have been marked and the new lanes are now open, making the road safer for everyone. The site is being used as a works compound with access provided for both light and heavy vehicles.

In the coming weeks, works will take place on the existing Newell Highway near the South Tomingley Rest Area; this is the “northern tie-in”, where the new section of road will re-join the existing highway through the village.

The tie-in will start about 1km south of the Tomingley Overhead Heavy Vehicle Gantry and progress south to McNivens Lane. During this work, the highway speed limit will be reduced to 80kph and access to the South Tomingley Rest Area may be temporarily blocked.



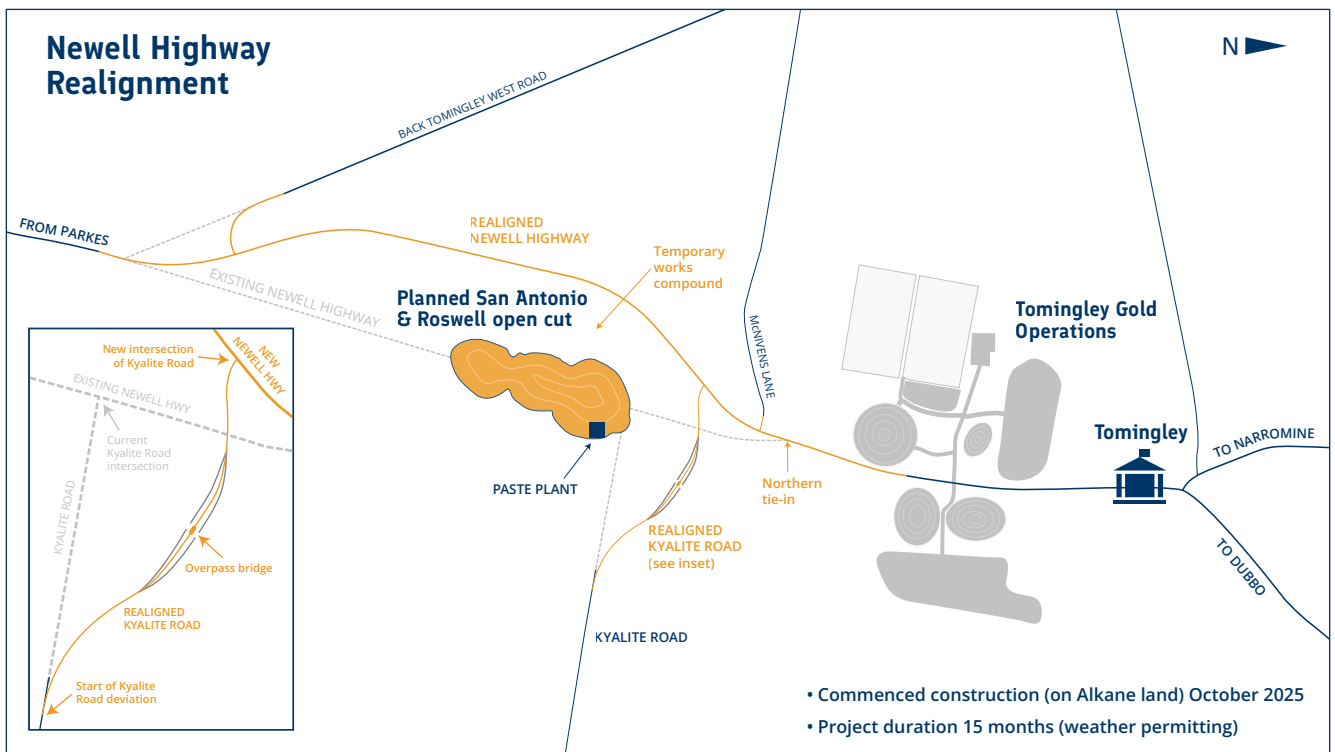
Construction zone: Tomingley Gold Extension Project

## What are we doing?

To support the expansion of Tomingley Operations, we are constructing a new 8.1km stretch of highway from Back Tomingley West Road to the Tomingley South Rest Area.

The project will be completed in stages, with works to be carried out from October 2025 through 2026. During construction works, we may need to implement temporary changes to the highway, such as detours around the works, to manage the highway traffic.

For more information, visit Alkane's website: <https://alkres.com/highway>



Map of Tomingley Gold Extension Project construction

## Kyalite Rd diversion

Over the past six months, we have been constructing the Kyalite Road diversion, which veers north from the existing road and will travel over the mine haul road via an overpass. The new intersection with the realigned Newell Highway will be about 770m northwest of the current intersection.

This project is also taking place offline on land owned by Tomingley Operations. We have engaged a contractor to build the overpass and expect construction to get underway during March. Works are expected to progress slowly until July, when it should ramp up. Target completion is in the early months of 2027.

Local residents will likely experience an increase in traffic. Heavy vehicles will access the site from Kyalite Road, near the paste plant. The primary light-vehicle access point is from Thornycroft Road.



Northwest view of Kyalite Rd diversion, showing earthworks for the overpass.

## Exploration update

### Roswell underground drilling

In February, Alkane announced drilling results for various programs in the Tomingley area, including an extensive underground drilling program at Roswell.

The mine geology team drilled 21 diamond core holes (totalling 4,019m) targeting the mid-section of a geological structure (referred to as the Western Monzodiorite/MZD domain) that lies near the current mining zone (referred to as the Andesite domain). The Western MZD domain hosts a significant portion of the Roswell underground Inferred Resource.

The drilling program confirmed multiple high-grade gold zones. We are now undertaking a second phase of drilling to test the upper and lower portions of the Western MZD domain. (See ASX Announcement 24 February 2026 for further details.)

The results of this drilling will improve confidence in the Roswell Mineral Resource Estimation and provide a basis for conversion to Tomingley Ore Reserves.

### Investigating a fault

Also at Roswell, the exploration team extended a previously drilled diamond core hole by 400m to test a feature identified in a 2022 seismic survey.

Based on the latest drill results, which revealed a zone of quartz veining, the feature is interpreted to be a major fault that has provided a conduit for upwelling of gold-enriched hydrothermal fluids to the Tomingley gold system.

We need to do more testing of the fault structure where it intersects the Andesite and Western MZD domains we are mining at Roswell. Watch this space!



Early exploration drilling at Roswell, looking north towards Tomingley Operations. (Image from Mitchell Services, 2019)

## El Paso and regional exploration

Alkane continues regional exploration to discover additional gold resources in the Tomingley area.

**El Paso.** Drilling at the El Paso prospect (Eulinda Park property) intercepted significant gold mineralisation and provided new data to refine the geological models. The team is currently planning the next round of drilling based on the revised model.

**Westray.** Following a sizable air-core drilling campaign (totalling 3,341m) between El Paso and Peak Hill, largely during the 2024-2025 summer, we identified new gold mineralisation at two prospects: Westray (3km north of Peak Hill) and a new prospect at El Paso Southeast (1km SE of El Paso). The Westray shallow gold mineralisation was recently tested with one RC drill hole to 194m, intersecting deeper gold mineralisation in fresh rock.

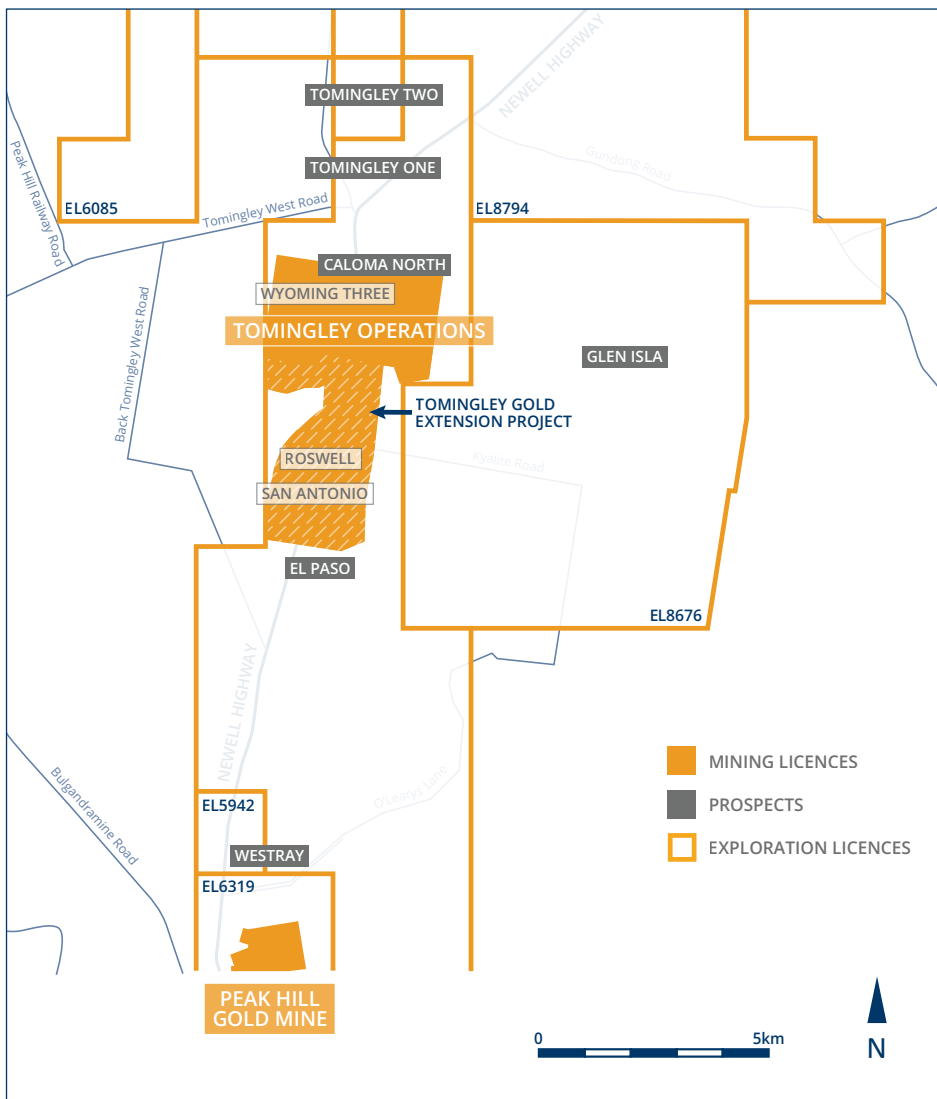
**Caloma North.** We have been drilling north of Caloma to test the northern extensions of the deposit. Three diamond core holes (each 400m long) have been completed, with a fourth commencing around the end of March.

**Wyoming Three.** Surface exploration drilling at the Tomingley mine site has commenced with diamond core drilling to test the underground potential at the Wyoming Three deposit.

**Tomingley One and Two** (about 5km north of the village). During the first half of March, we drilled three diamond core holes (250–350m long) at Tomingley One and Two to characterise the mineralisation of these prospects.

**Glen Isla** (about 5km east of the mine). In the coming months, we plan to commence four diamond core drill holes at Glen Isla (150–300m long) to test epithermal gold targets generated from an Induced Polarisation (IP) survey completed in 2025. Rock chip sampling was undertaken in May 2025 to help better understand the geology of the area.

**San Antonio and Roswell.** Additionally, we intend to undertake surface drilling around the San Antonio and Roswell deposits, mostly within the Mining Lease. This will test new targets for extensions to the deposits and for new mineralisation nearby.



Regional exploration in the Tomingley area 2025-2026

## Peak Hill deep drill hole

During most of February, Alkane drilled an extra-deep diamond core hole beneath the old pits at Peak Hill Gold Mine, 15km south of Tomingley. We are testing for the existence of a copper-gold porphyry beneath the epithermal gold lithocap that Alkane previously mined (1996–2005).

It took almost a month to drill the 1,650m-long hole, which ended 1,240m vertically beneath the surface. Its curved profile began at a 70-degree angle and finished at around 21 degrees relative to the surface.

Diamond core drilling involves extracting coherent rock in increments up to 6m in length; these are winched back to surface before drilling the next 6m. The diameter of the hole started at 122mm. After about 150m of drilling, we adjusted the diameter to 96mm, then 75mm from around 1,000m.

The reasons for this adjustment or “casing down” included:

- It decreased the weight of core being pulled back up the deep hole (affects the cost).
- It meant we could leave the larger hollow rods in the ground and drill through them. This protects the main drill string from soft or broken ground that could damage the rods or block the hole.
- We gained better control on the direction the hole was going.

Next steps will involve inspecting and logging all that core and sending samples off for analysis. The drilling was partially funded by a grant under the NSW Critical Minerals and High-Tech Metals Exploration Program.



Above: Aerial view of Peak Hill showing location of the deep drill hole

Right: Cross section schematic of deep hole profile underground

# Community

## Tomingley Community Fund

The February 2026 round of the Tomingley Community Fund saw \$81,495 awarded across nine different community groups. The successful applicants are named below.

We were delighted to see a strong field of applicants, although not all applicants received the full amount they applied for due to the bi-annual cap.

### Lifeline Central West

towards the Tackling Tough Conversations program at Narromine High School

### Dusty Boots Festival

towards the Dusty Boots Festival and Award Night (5-8 June 2026)

### Far Western Country Women's Association

towards the CWA School Public Speaking and Debating Competition (19 May - 22 June)

### Lions Club Narromine

towards the Lions All Ability Camp (7-11 September 2026)

### Narromine Business Collective

towards the Narromine Region Business Awards Night (1 August 2026)

The next round of funding will open for submissions in September 2026. Funding is awarded on a submission basis and based on the benefit it will provide to the local community. The final recipients are jointly approved by Tomingley Operations and Narromine Shire Council. See Alkane's website for more information on how to apply.

### Narromine Country Education Foundation

support for youth to attend post-school training and education

### Narromine Golf Club

towards golf course maintenance

### Tomingley Picnic Race Club

sponsorship of the Alkane Resources Ltd Tomingley Picnic Cup\* horse race (18 April 2026)

### Tomingley Racecourse and Recreation Reserve

towards the Tomingley Quick Shear event (5 September 2026)

\*We're also sponsoring Fashions on the Field at the Tomingley Picnic Races again this year.

## Additional sponsorships

### Narromine Car Club show

Tomingley Operations again sponsored the Narromine Car Club 2026 Car Show, Swap Meet & Market Stalls, held on Sunday 15 March at Narromine Golf Club.

Our Fixed Plant Maintenance Superintendent, Jason Stone, attended on the day and was a guest judge.

### Ear health bus

Tomingley Operations donated \$10,000 to the Hear Our Heart Bus Project, which provides free mobile hearing tests and ear health education to children.

The program is a project of the Dubbo & District Parent Support Group for the Deaf and Hearing-Impaired Inc. (also known as the Dubbo & District Deaf Club). This non-profit organisation is not government funded and relies on sponsorships and donations. (See <https://www.hearourheart.org> for further information.)



1972 Falcon 4WD exhibited at the Narromine Car Club Show

## Restoration of Dandaloo Church

We congratulate the Dandaloo community for completing a beautiful restoration of the historic Dandaloo Community Church, about 60km west of Narromine. Built by the Martel family in 1888 as a family mausoleum, this church is now the oldest surviving building in Narromine Shire.

The completion of the church's restoration was celebrated on Sunday 1 March with a traditional service, delivered by Anglican Ministers from Narromine and Peak Hill. The restoration included painting the church exterior, oiling/staining the interior timber finishes, and building a levee to safeguard the church against future flooding.

The Tomingley Community Fund contributed \$15,000 towards the restoration, which reportedly cost around \$63k and involved a great deal of voluntary labour and services.



*The newly restored Dandaloo Community Church held a service of thanksgiving on 1 March.*

## Introducing Alkane's new logo



Following the merger with Mandalay Resources, Alkane has adopted a new logo for the enlarged company's progression into an exciting new era.

The logo design features the letter A for Alkane, along with a representation of stacked gold bars that link to the company's core business as a gold producer. It's based on a winning concept created by Jade Buckman (WHS Manager, Tomingley Operations), after a company-wide competition.

## How to find out more

### Alkane website

 [alkres.com](http://alkres.com)  
[alkres.com/community-hub](http://alkres.com/community-hub)

### Subscribe to this newsletter

 [alkres.com/subscribe](http://alkres.com/subscribe)

### Follow our social channels

 (Formerly Twitter)  
[@AlkaneResources](https://twitter.com/AlkaneResources)

 LinkedIn

[linkedin.com/company/alkane-resources-ltd](https://linkedin.com/company/alkane-resources-ltd)

### Talk to us directly

 Community Information Line  
[tomingleygold@alkres.com](mailto:tomingleygold@alkres.com)  
(02) 6865 6116