

**TOMINGLEY GOLD MINE**

# Monthly Environmental Monitoring Report

**February 2026**

# TOMINGLEY GOLD MINE

## Monthly Environmental Monitoring Report

February 2026

---

### Document History

Date	Version	Reason For Change	Author
	1	Submitted for Information	JL
	2	Updated figures, diagrams and other minor edits	LM

---

## Table of Contents

<b>1. INTRODUCTION AND SCOPE .....</b>	<b>4</b>
<b>2. WEATHER STATION DATA .....</b>	<b>4</b>
<b>3. MONITORING LOCATIONS .....</b>	<b>5</b>
<b>4. AIR QUALITY MONITORING.....</b>	<b>6</b>
A. TEOM PM <sub>10</sub> Particulates Monitoring .....	6
B. High Volume Air Sampler - Total Suspended Particulates.....	10
<b>5. NOISE MONITORING.....</b>	<b>11</b>
<b>6. SURFACE WATER MONITORING .....</b>	<b>11</b>
A. RSF and Wyoming Central Dam.....	11
B. Sedimentation Basins .....	11
C. Gundong Creek .....	11
<b>7. GROUNDWATER MONITORING .....</b>	<b>12</b>
<b>8. BLAST MONITORING.....</b>	<b>12</b>
<b>9. BIODIVERSITY MONITORING.....</b>	<b>12</b>

## 1. Introduction and Scope

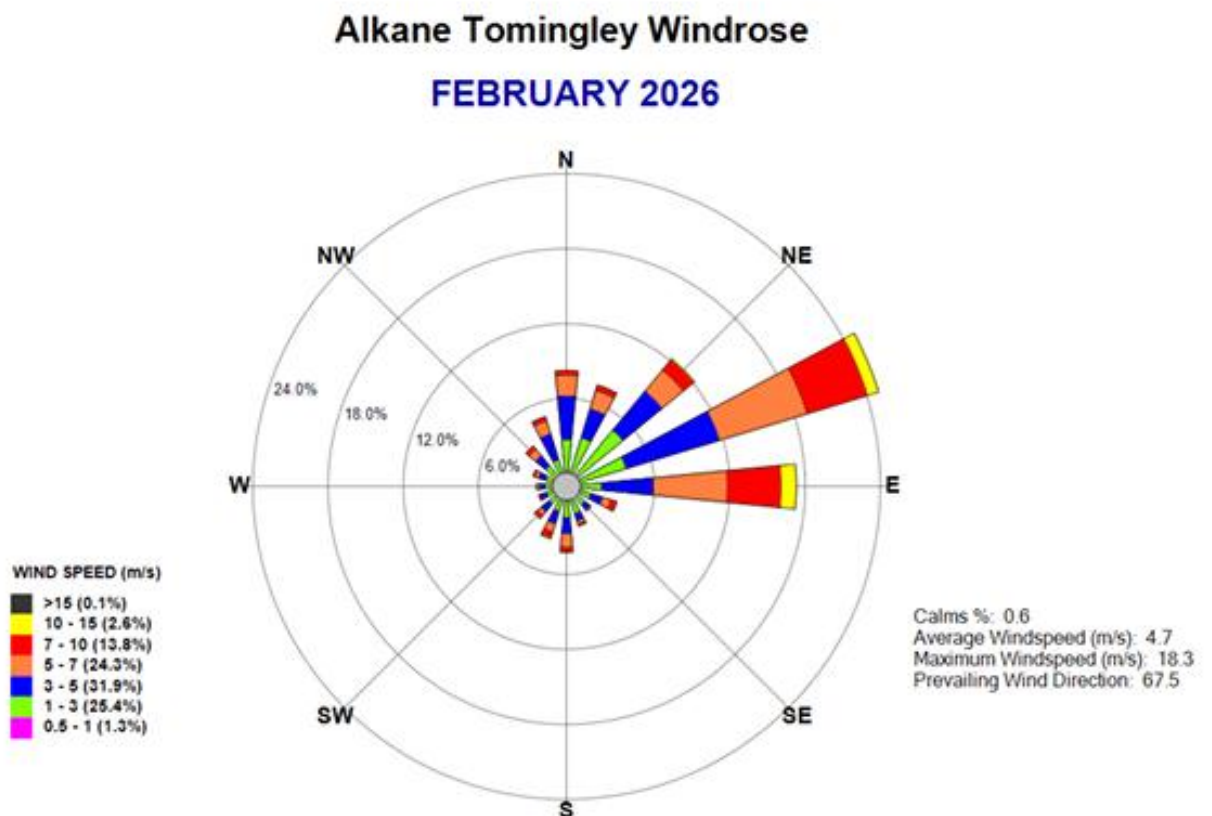
This Monthly Environmental Monitoring Report has been prepared to collate environmental monitoring data undertaken for the Tomingley Gold Operation (TGO) during the month of February 2026.

This report also compares data collected to targets and provides commentary on environmental issues during the month.

## 2. Weather Station Data

TGO operates a permanent weather monitoring station. This weather station provides the mine site with continuous real-time data. Reporting requirements as stipulated in EPL 20169 include wind direction and wind speed at 10 metres **Figure 1** and rainfall mm **Table 1**.

**Figure 1. TGO Wind Rose**



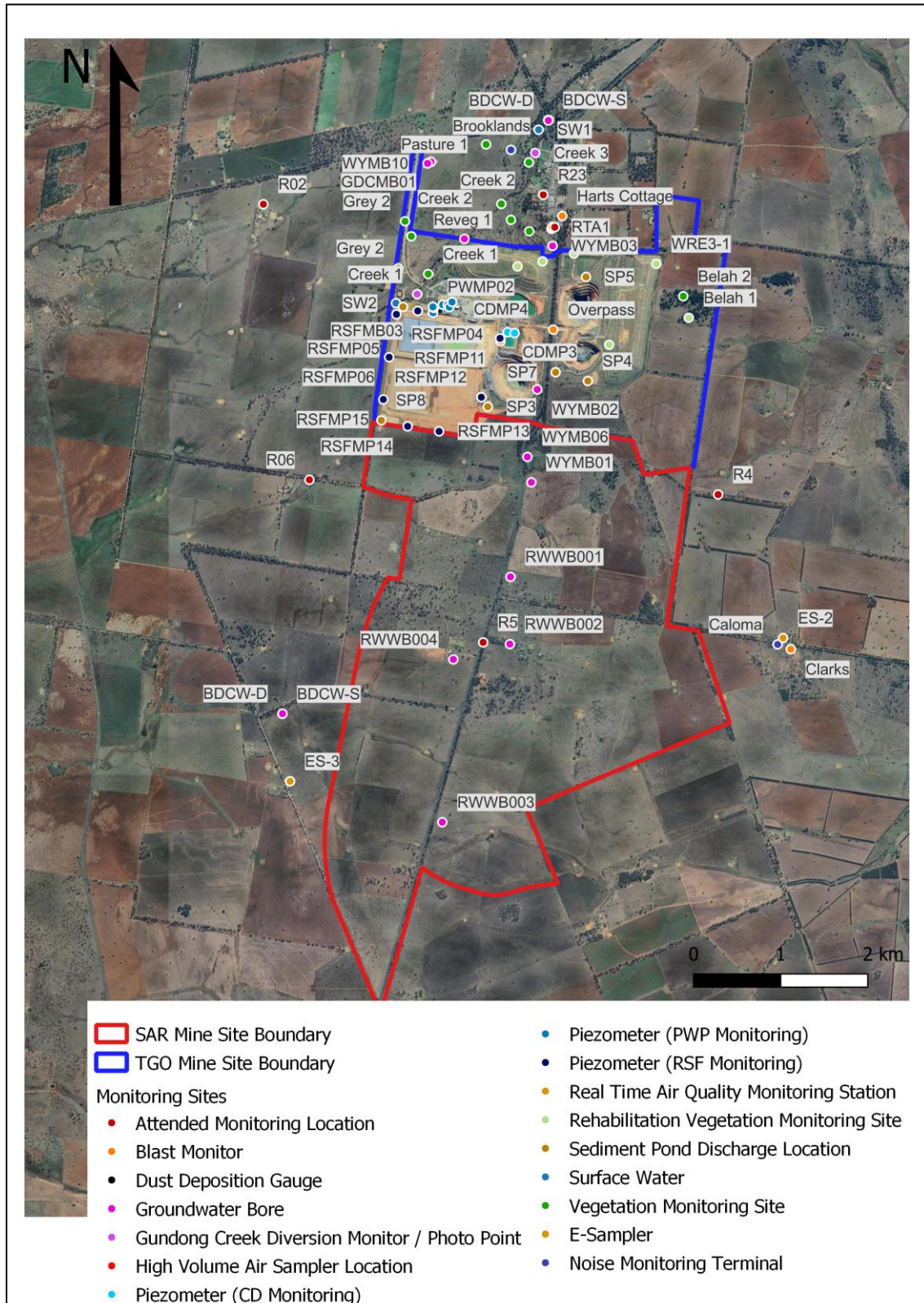
**Table 1. TGO Rainfall Data**

February 2026	Rainfall (mm)	Year to Date
<b>Total Rainfall</b>	59.4mm	63.4mm

### 3. Monitoring Locations

Figure 2 indicates the location of where monitoring is undertaken for the project. Any additional monitoring undertaken will be discussed within the body of this report.

Figure 2. TGO Environmental Monitoring Sites



## 4. Air Quality Monitoring

---

### A. TEOM and E-Sampler PM<sub>10-2.5</sub> Particulates Monitoring

PM<sub>10</sub> is measured via a Tapered Element Oscillating Microbalance (TEOM) located at the southern edge of the Tomingley Village. There are an additional three E-Sampler systems set up around the edges of site that sample both PM<sub>10</sub> and PM<sub>2.5</sub>. These machines transmit real-time data via the internet to a computer located on site.

TGO monitor and report on compliance with the air quality conditions stipulated in TGO's Project Approval: Tomingley Gold Project. Impact assessment criteria as stipulated in the SSD refers to any residence on privately-owned land or on more than 25 percent of any privately-owned land. Refer to **Tables 2 & 3** for conditions pertaining to TEOM monitoring.

**Table 2:** Long term impact assessment criteria for particulate matter

<i>Pollutant</i>	<i>Averaging Period</i>	<i>d Criterion</i>
Total suspended particulate (TSP) matter	Annual	a 90 µg/m <sup>3</sup>
Particulate matter < 10 µm (PM <sub>10</sub> )	Annual	a 25 µg/m <sup>3</sup>
Particulate matter < 2.5 µm (PM <sub>2.5</sub> )	Annual	a 8 µg/m <sup>3</sup>

**Table 3:** Short term impact assessment criterion for particulate matter

<i>Pollutant</i>	<i>Averaging Period</i>	<i>d Criterion</i>
Particulate matter < 10 µm (PM <sub>10</sub> )	24 hour	a 50 µg/m <sup>3</sup>
Particulate matter < 2.5 µm (PM <sub>2.5</sub> )	24 hour	a 25 µg/m <sup>3</sup>

There was nil exceedances of the assessment criteria as shown in **Figures 3-9**.

Figure 3. TEOM Data

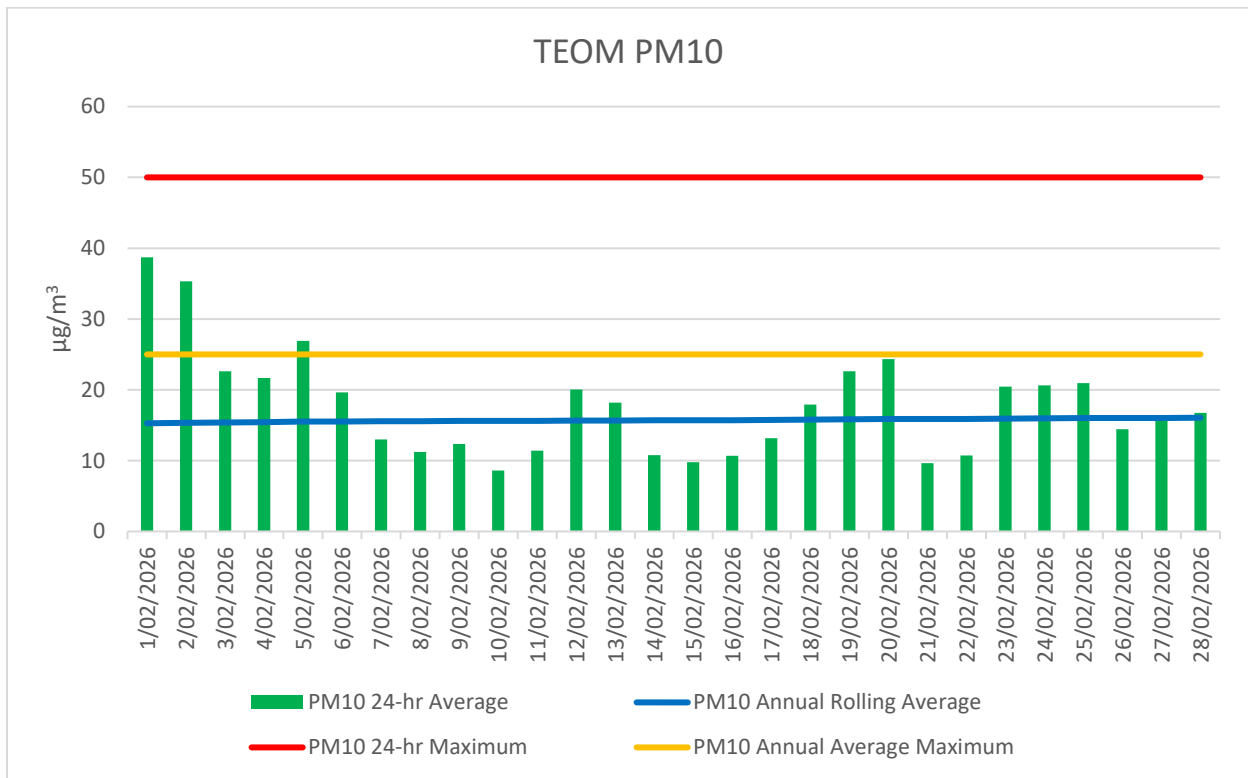


Figure 4. ES01 PM<sub>10</sub> Data

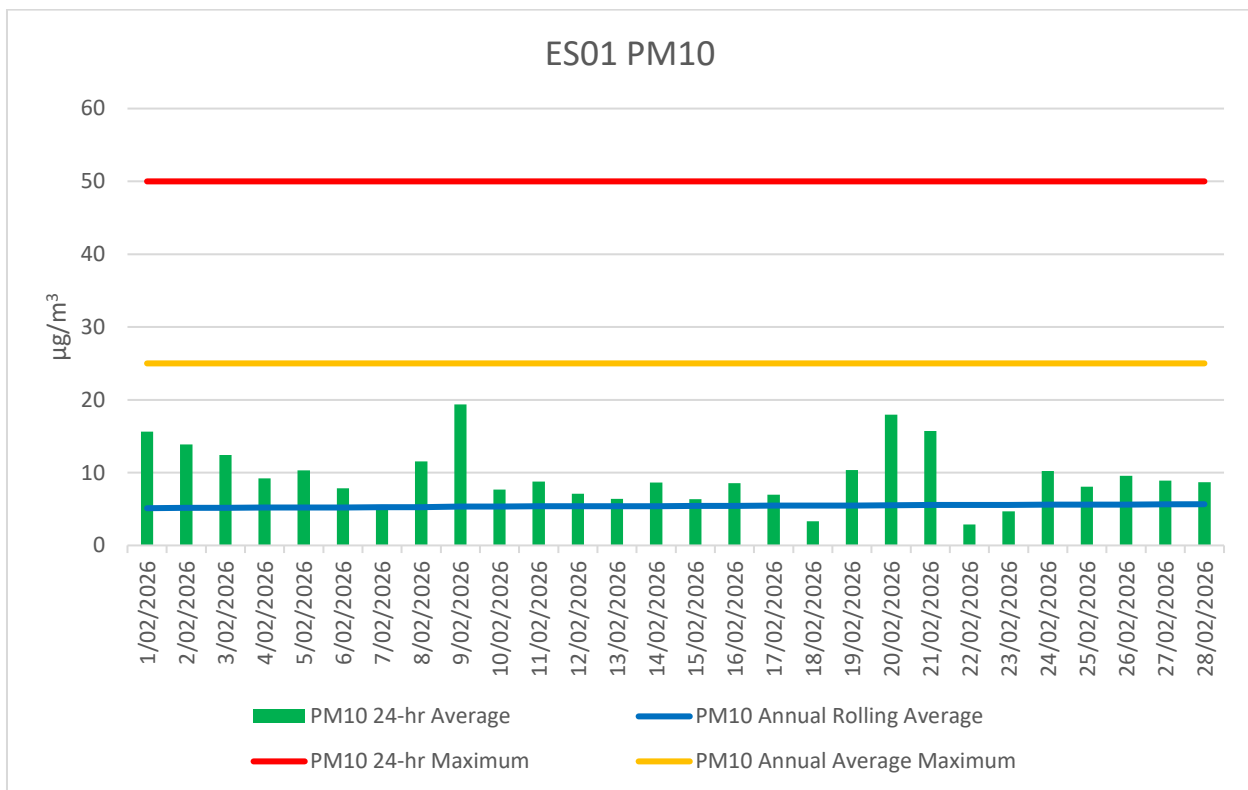


Figure 5. ES01 PM<sub>2.5</sub> Data

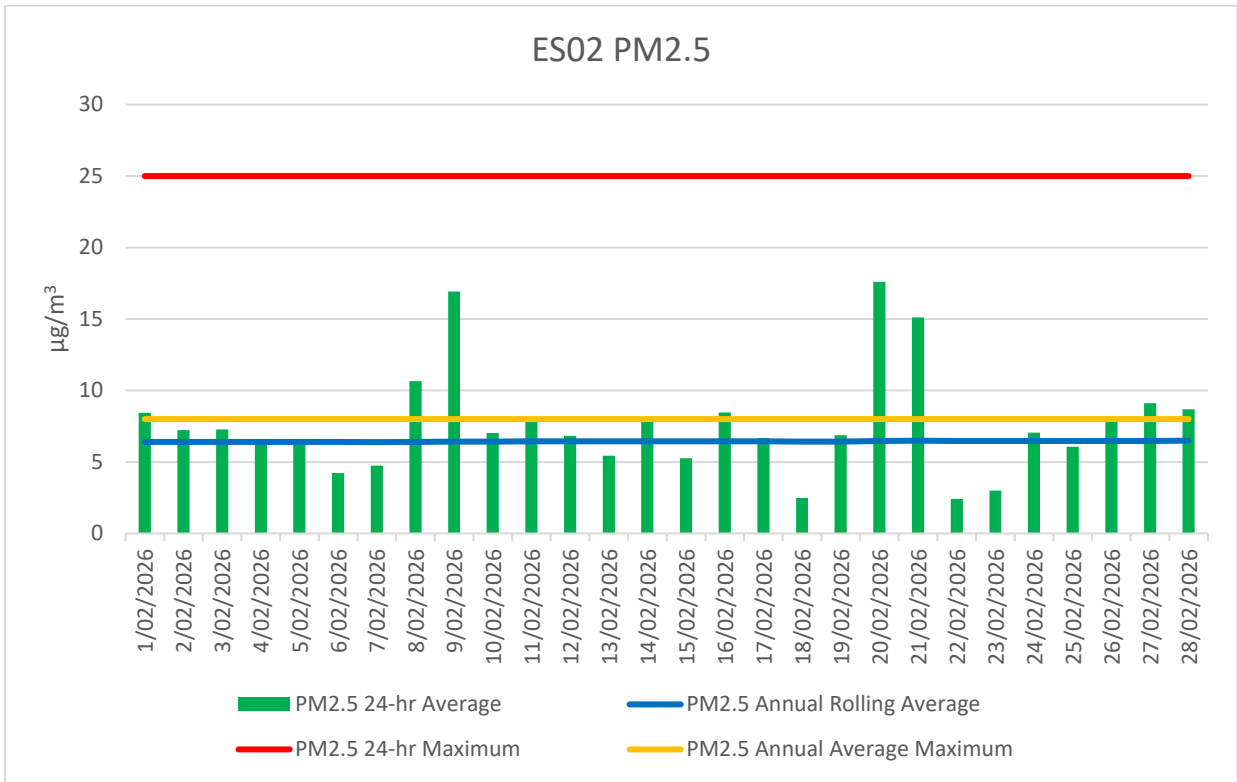


Figure 6. ES02 PM<sub>10</sub> Data

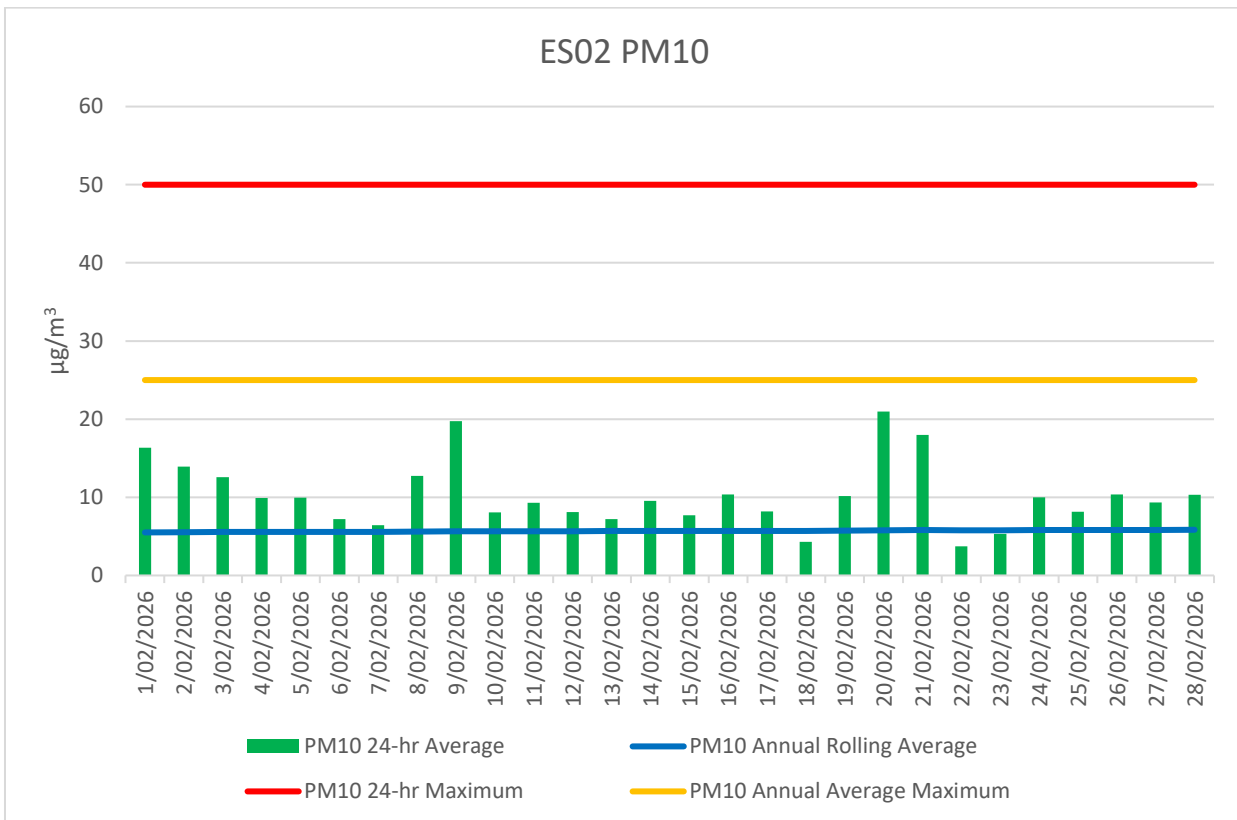


Figure 7. ES02 PM<sub>2.5</sub> Data

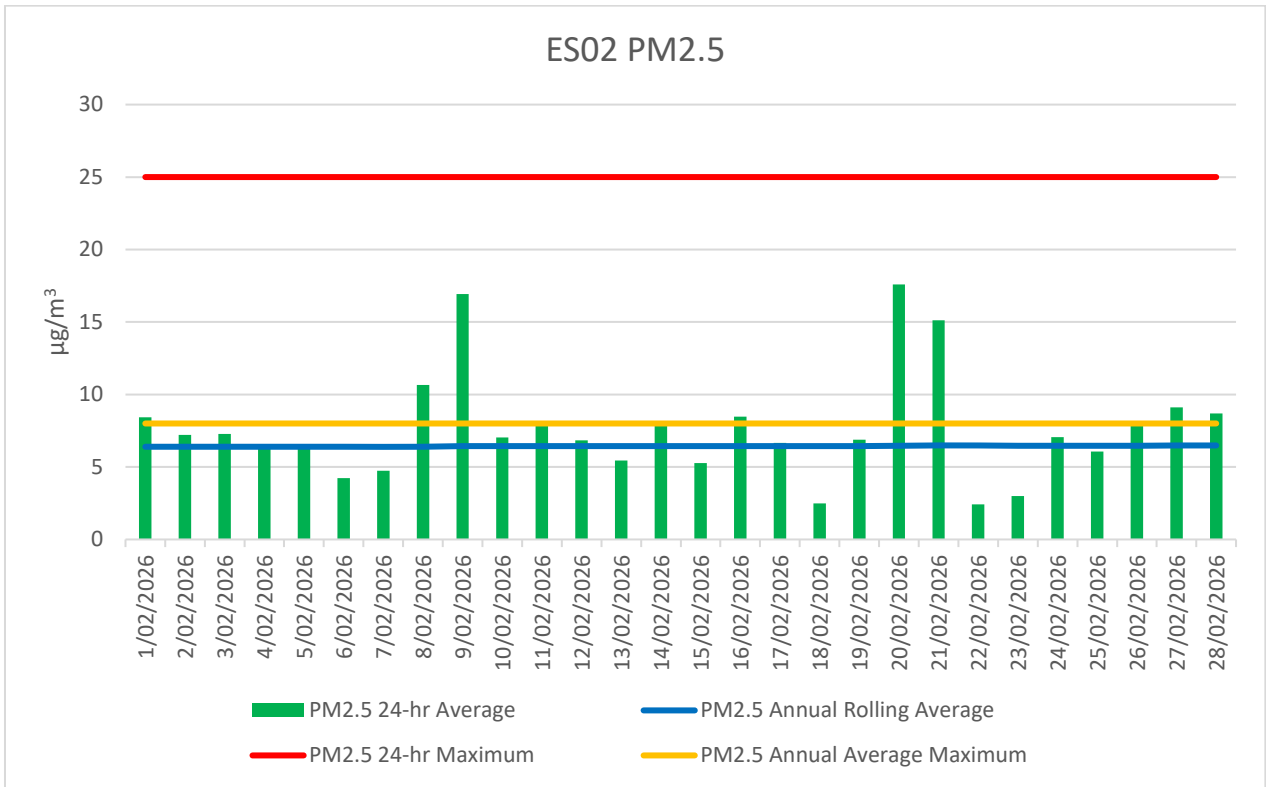
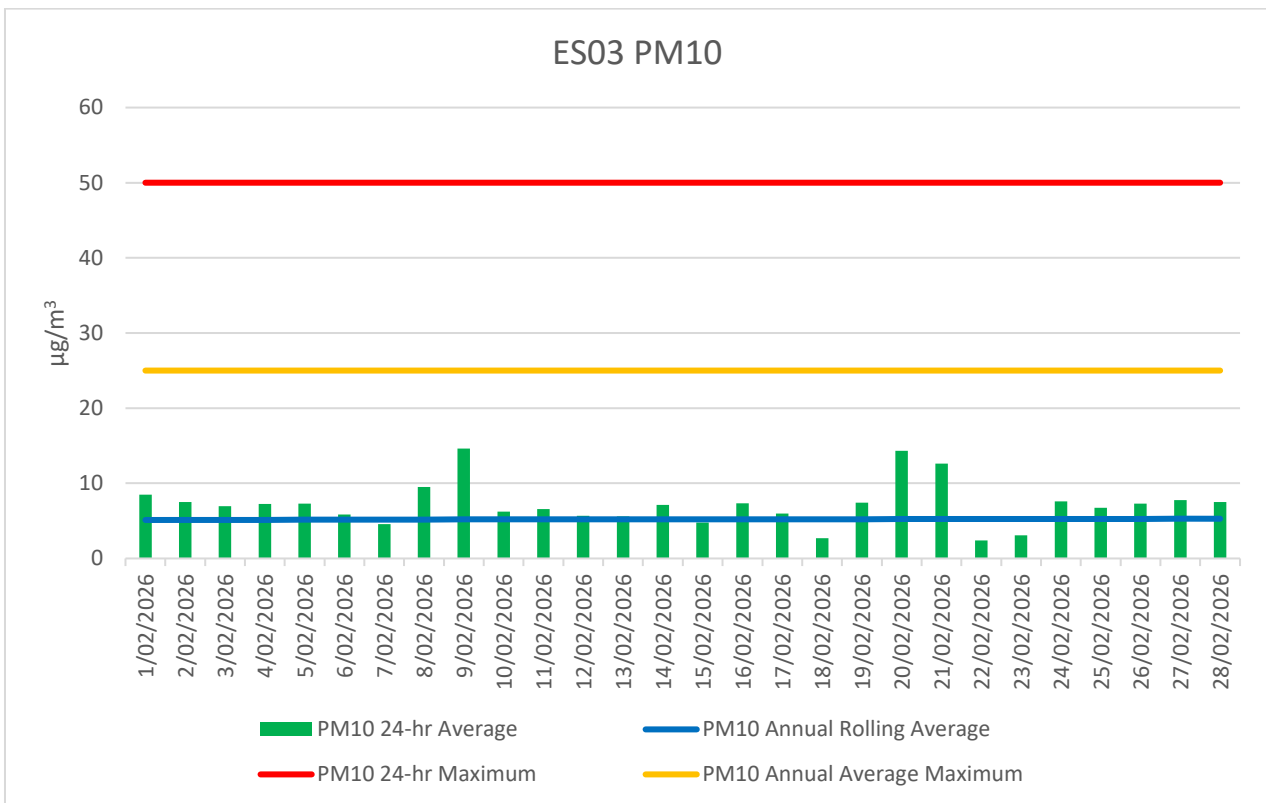
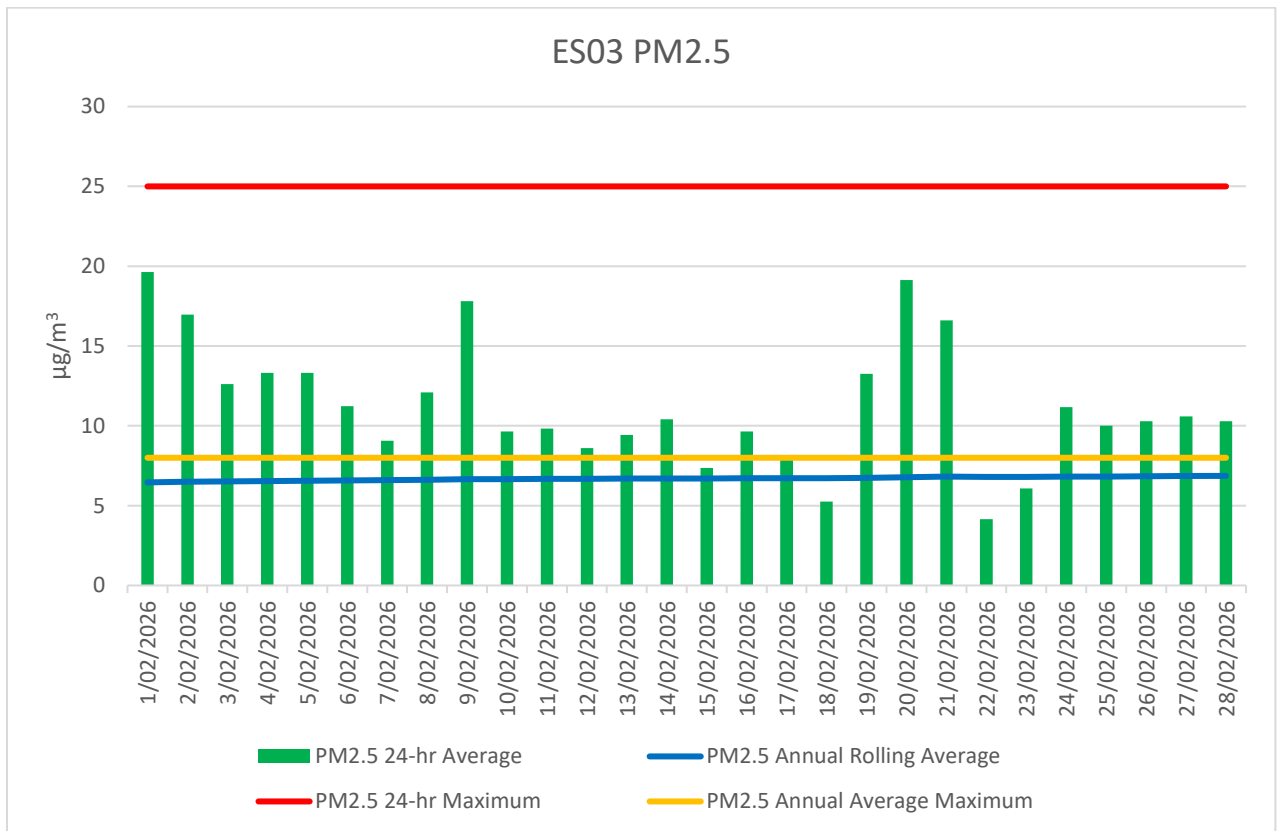


Figure 8. ES03 PM<sub>10</sub> Data



**Figure 9. ES03 PM<sub>2.5</sub> Data**



**B. High Volume Air Sampler - Total Suspended Particulates**

One High Volume Air Sampling (HVAS) unit has been installed in Myall Street, Tomingley, (in the yard of the closest receptor) just north of the Project site. The HVAS measures Total Suspended Particulates (TSP) on a 24-hour, one-day-in-six frequency and is co-located with the TEOM. **Table 4** below provides the results.

The performance criteria for TSP are averaged over 12 months.

**Table 4. Hi-Volume Air Sampler Results**

Location	Sample Date	Results (TSP µg/m³)	Year to Date Average (TSP µg/m³)	Performance Criteria (Annual Average)	Complies
HVAS1	05/02/2026	62	59.85	90	Y
HVAS1	11/02/2026	61.3			
HVAS1	17/02/2026	41.5			
HVAS1	23/02/2026	45.8			
HVAS1	-	-			
HVAS1	-	-			

## 5. Noise Monitoring

---

TGO uses a combination of real-time and attended monitoring to evaluate the performance of the project. For monitoring locations see **Figure 10**.

A review of monitoring data and operator attended observations determined that TGO contributions did not exceed relevant limits during applicable meteorological conditions. A full report is provided separately on the Alkane webpage.

## 6. Surface Water Monitoring

---

TGO undertakes water quality monitoring at several locations within and surrounding the site. Water quality monitoring locations (**Figure 2**) include those locations specified in EPL 20169, as well as additional sampling locations. The intent of the surface water monitoring program is to ensure that the water quality impacts associated with the mining operations are minimised.

EPL 20169 requires that surface water quality be monitored at two locations within the process water system (RSF) and (Wyoming Central Dam); six locations within the dirty water system (Sediment Basins); and two locations within the surrounding clean water system (Gundong Creek).

### A. RSF and Wyoming Central Dam

The required monitoring frequency for both points is daily during discharge. TGO monitor for Cyanide (weak acid dissociable (WAD)) with a 90-percentile concentration limit of 20mg/L and 100-percentile concentration limit of 30mg/L.

WAD cyanide discharge levels for the month are summarised below.

- Monthly average: 2.89 mg/L
- Daily maximum: 9.84 mg/L
- Daily minimum: 0.07 mg/L

Samples assessed during the month were within guidelines.

### B. Sedimentation Basins

TGO's six sediment basins are licenced discharged points. EPL 20169 monitoring frequency for these sediment basins is during discharge.

### C. Gundong Creek

Due to the ephemeral nature of Gundong Creek, water quality sampling opportunities are limited. Gundong Creek does not provide a secure water supply either for human consumption or agricultural purposes. Gundong Creek may however provide additional irrigation and stock water. TGO's SSD requires baseline water trigger levels to be maintained or improved.

No samples were taken for the month due to no flows in the creekline.

## 7. Groundwater Monitoring

---

TGO undertake quarterly groundwater monitoring in line with EPL and SSD requirements. The purpose of the groundwater monitoring program is to provide a framework for monitoring and management of groundwater quality and levels. Results are reported in TGO's Annual Review which is made available to the public on the Alkane webpage.

## 8. Blast Monitoring

---

TGO operate to the blasting criteria as stipulated in our EPL and SSD. These conditions include airblast overpressure, ground vibration, frequency. Refer to **Table 5** below for Project Approval conditions pertaining to blast monitoring.

**Table 5** Blasting Criteria

<i>Location</i>	<i>Airblast Overpressure (dB(Lin Peak))</i>	<i>Ground Vibration (mm/s)</i>	<i>Allowable Exceedance</i>
Residence on privately owned land	120	10	0%
	115	5	5% of total blasts over any 12 month period
All public infrastructure	Nil limit	50	0%
RSF 1 and RSF 2 embankments	Nil limit	49	RSF 1 and RSF 2 embankments

*However, apart from the limit on the RSF1 and RSF 2 embankments, these criteria do not apply if the Proponent has a written agreement with the relevant landowner, and has advised the Department in writing of the terms of this agreement.*

Blasts that trigger the monitoring equipment are recorded and the data is retained on site. There were no blast exceedances during the month.

## 9. Biodiversity Monitoring

---

TGO are required to report any incident of death or injury (including bogging or miring) of fauna (avian or terrestrial) associated with the RSF as stipulated in EPL 20169.

### Reportable fauna incidents:

- No reportable incidents were recorded during the month.