

Noise Monitoring Assessment Monthly

Tomingley Gold Mine

January 2026

Prepared For: Tomingley Gold Operations Pty Ltd

March 2026

MAC160270-2026RP01



mulleracoustic.com

Document Information

Noise Monitoring Assessment

Monthly

Tomingley Gold Mine

January 2026

Prepared for: Tomingley Gold Operations Pty Ltd




Prepared by: Muller Acoustic Consulting Pty Ltd

PO Box 678, Kotara NSW 2289

ABN: 36 602 225 132

P: +61 2 4920 1833

www.mulleracoustic.com

PROJECT MANAGER	PREPARED BY	REVIEWED BY	DATE	REPORT NO
Daniel Brown	William Archer	Oliver Muller	3 March 2026	MAC160270-2026RP01
				

Field Officer: William Archer

DISCLAIMER

All documents produced by Muller Acoustic Consulting Pty Ltd (MAC) are prepared for a particular client's requirements and are based on a specific scope, circumstances and limitations derived between MAC and the client. Information and/or report(s) prepared by MAC may not be suitable for uses other than the original intended objective. No parties other than the client should use or reproduce any information and/or report(s) without obtaining permission from MAC. Any information and/or documents prepared by MAC is not to be reproduced, presented or reviewed except in full.

CONTENTS

1 INTRODUCTION.....5

2 ENVIRONMENTAL PROTECTION LICENSE NOISE LIMITS.....7

3 METHODOLOGY9

 3.1 LOCALITY9

 3.2 ASSESSMENT METHODOLOGY.....9

4 RESULTS 11

 4.1 METEOROLOGICAL CONDITIONS 11

 4.2 ASSESSMENT RESULTS - LOCATION R2..... 13

 4.3 ASSESSMENT RESULTS - LOCATION R3/29..... 14

 4.4 ASSESSMENT RESULTS - LOCATION R4..... 15

 4.5 ASSESSMENT RESULTS - LOCATION R5..... 16

 4.6 ASSESSMENT RESULTS - LOCATION R6..... 17

 4.7 ASSESSMENT RESULTS - LOCATION R23..... 18

5 DISCUSSION 19

 5.1 DISCUSSION OF RESULTS - LOCATION R2 19

 5.2 DISCUSSION OF RESULTS - LOCATION R3/29 19

 5.3 DISCUSSION OF RESULTS - LOCATION R4 19

 5.4 DISCUSSION OF RESULTS - LOCATION R5 19

 5.5 DISCUSSION OF RESULTS - LOCATION R6 20

 5.6 DISCUSSION OF RESULTS - LOCATION R23 20

6 COMPARISON OF ATTENDED AND UNATTENDED MONITORING RESULTS 21

7 CONCLUSION 23

APPENDIX A – GLOSSARY OF TERMS

This page has been intentionally left blank

1 Introduction

Muller Acoustic Consulting Pty Ltd (MAC) has been commissioned by Tomingley Gold Operations Pty Ltd (TGO) to complete a Noise Monitoring Assessment (NMA) for Tomingley Gold Mine (the mine), Tomingley, NSW.

The NMA involved quantifying the noise contribution of the mine by direct attended measurements to determine mining noise emissions so that effective management and controls can be implemented where required. The monitoring has been conducted in accordance with the TGO Noise Management Plan and in general accordance with Conditions L4.2 to L4.7 of the EPL at six representative receiver locations. It is noted that this assessment has been completed as part of an internal noise management initiative and does not form part of the annual noise monitoring program to address conditions of the Environmental Protection License (EPL).

The assessment has been conducted in accordance with the following documents:

- NSW Environment Protection Authority (EPA), Noise Policy for Industry (NPI), 2017;
- NSW Environment Protection Authority (EPA), Approved Methods for the measurement and analysis of environmental noise in NSW, 2022;
- NSW Government, Department of Planning, Housing and Infrastructure, Development Consent SSD 9176045, 21 February 2023;
- NSW Environment Protection Authority (EPA), Environment Protection Licence # 20169 (EPL);
- Standards Australia AS/NZS IEC 61672.1-2019-Electroacoustics - Sound level meters – Specifications; and
- Standards Australia AS 1055:2018 - Acoustics - Description and measurement of environmental noise - General Procedures.

A glossary of terms, definitions and abbreviations used in this report is provided in **Appendix A**.

This page has been intentionally left blank

2 Environmental Protection License Noise Limits

Historic Noise Assessments for the mine categorise receivers into Noise Assessment Groups (NAGs). The NAGs were derived based on ambient noise data that controlled receiver RBLs.

Table 1 reproduces the operational and sleep disturbance noise limits for assessed receivers referenced from the historic EPL and have been adopted for this NMA which are consistent with historic monitoring locations.

Table 1 Noise Limits, dBA					
Noise Assessment Group	Receivers	Day	Evening	Night	
		LAeq(15min)	LAeq(15min)	LAeq(15min)	LA1(1min)
NAG A	R4, R5, R6	35	35	35	45
NAG B	R2	36	35	35	45
NAG C	R3/29	45	35	35	45
NAG D	R23	43	38	36	45

Note: Refer to figure in Appendix 3 of Development Consent SSD 9176045, 21 February 2023 for noise locations. However, these criteria do not apply if the Proponent has an agreement with the relevant owner(s) of these residences / land to generate higher noise levels, and the Proponent has advised the Department of Planning, Housing and Infrastructure and EPA in writing of the terms of this agreement.

Note: It is understood that EPL #20169 was updated in May 2024. Notwithstanding this, the receiver noise criteria adopted in this assessment are referenced from the historic EPL issued in September 2016, which is more conservative and provides NAGs for attended monitoring locations.

This page has been intentionally left blank

3 Methodology

3.1 Locality

TGO is located to the south of the village of Tomingley, NSW. Receivers in the locality surrounding the mine are primarily rural/residential and for consistency the naming conventions for each receiver have been retained from historic Noise Assessments. The monitoring locations with respect to the mine are presented in the locality plan shown in **Figure 1**.

3.2 Assessment Methodology

The attended noise survey was conducted in general accordance with the procedures described in Standards Australia AS 1055:2018, "Acoustics - Description and Measurement of Environmental Noise" and the EPL. Measurements were carried out using a Svantek Type 1, 971 noise analyser between Tuesday 20 January 2026 and Friday 23 January 2026. The acoustic instrumentation used carries appropriate and current NATA (or manufacturer) calibration certificates with records of all calibrations maintained by MAC as per Approved Methods for the measurement and analysis of environmental noise in NSW (EPA, 2022) and complies with AS/NZS IEC 61672.1-2019-Electroacoustics - Sound level meters - Specifications. Calibration of all instrumentation was checked prior to and following measurements. Drift in calibration did not exceed ± 0.5 dBA.

Both evening and night measurements were of 15-minutes in duration. Where possible, throughout each survey the operator quantified the contribution of each significant noise source. Extraneous noise sources were excluded from the analysis to calculate the $L_{Aeq}(15min)$ mine noise contribution for comparison against the relevant EPL limit.

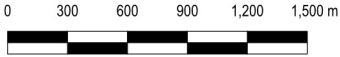
Prevailing meteorological conditions for the monitoring period were sourced from TGO's on-site meteorological station and analysed in accordance with Appendix D1 of the NPI to determine the stability category present at the time of each measured sample. This was undertaken to determine applicability of results in accordance with Condition L4.3 of the EPL. Results obtained during non-prevailing meteorological conditions (ie F Class Stability in conjunction with a 2m/s drainage or G Class Stability) are considered not applicable against the EPL criteria.

FIGURE 1
LOCALITY PLAN
MAC160243
TGO Compliance



KEY

- Receivers
- Brooklands
- Boundary



4 Results

The monitoring and assessment results are presented in individual tables for each assessment location.

4.1 Meteorological Conditions

Weather data for the noise assessment was sourced from TGOs on-site meteorological station as well as operator measured conditions on site of EPL nominated receiver locations. The data was used to determine prevailing meteorological conditions at the time of the attended measurements, which are presented in **Table 2**.

Table 2 Prevailing Meteorological Conditions

Date & Time	TGO on-site Meteorological Station (10m AGL)		Operator Measured Weather Monitoring Location (1.8m AGL)	
	Wind Direction	Wind (m/s)	Wind Direction	Wind (m/s)
	20/01/2026 19:53	S	2.7	SE
20/01/2026 20:17	SW	1.9	SE	<0.1
20/01/2026 20:38	S	2.6	SE	<0.1
20/01/2026 21:06	S	2.6	SE	<0.1
20/01/2026 21:27	S	1.4	SE	<0.1
20/01/2026 21:50	S	2.5	SE	<0.1
20/01/2026 22:37	SE	2.5	SE	1.5
20/01/2026 23:14	E	4.8	S	1.8
20/01/2026 23:34	E	5.1	SE	1.0
21/01/2026 00:02	E	3.4	SE	1.4
21/01/2026 00:33	E	3.9	SE	2.5
21/01/2026 01:00	E	6.4	SE	1.8
21/01/2026 19:35	SW	3.5	E	<0.1
21/01/2026 19:58	SW	2.0	E	<0.1
21/01/2026 20:19	SW	1.9	S	0.1
21/01/2026 20:48	SW	1.6	E	0.3
21/01/2026 21:19	N	0.1	NE	0.4
21/01/2026 21:44	W	0.2	NE	<0.1
21/01/2026 22:20	E	1.5	N	<0.1
21/01/2026 22:48	E	1.6	E	<0.1
21/01/2026 23:13	E	1.3	S	0.2
21/01/2026 23:49	E	1.1	N	<0.1
22/01/2026 00:23	NE	1.0	N	<0.1
22/01/2026 00:50	SE	0.6	N	<0.1
22/01/2026 19:32	S	3.5	SW	1.2
22/01/2026 19:56	S	2.7	SW	0.5
22/01/2026 20:15	SW	2.8	S	0.3
22/01/2026 20:42	S	2.1	SE	0.5
22/01/2026 21:13	S	1.6	S	<0.1
22/01/2026 21:39	SE	2.2	S	<0.1
22/01/2026 22:00	SE	1.9	S	<0.1
22/01/2026 22:30	SE	2.2	SE	<0.1
22/01/2026 22:49	SE	2.6	SE	<0.1
22/01/2026 23:13	SE	2.5	SE	<0.1
22/01/2026 23:31	E	1.3	E	3.0
23/01/2026 00:20	NE	9.6	E	3.0

4.2 Assessment Results - Location R2

The results of the attended noise measurements at location R2 for the January 2026 survey are summarised in **Table 3** with the relevant EPL limits, the calculated mining noise contribution and prevailing meteorological conditions at the time of each measurement.

Table 3 Operator-Attended Noise Survey Results - Location R2							
Date	Time (hrs)	Descriptor (dBA re 20µPa)			EPL Limit	Meteorology ¹	Description and SPL, dBA
		L _{Amax}	L _{Aeq}	L _{A90}			
20/01/2026	19:53	69	47	25	35	WD: SE	Traffic 20-69
						WS: 0.2m/s	Birds 25-65
							Livestock 25-30
							TGO Inaudible
TGO Site L _{Aeq} (15min) Contribution							<20
20/01/2026	22:37	48	38	29	35	WD: SE	Windblown Vegetation 20-48
						WS: 1.5m/s	Traffic 20-33
							Insects 26-31
							TGO Mobile Plant 20-25
							TGO Reverse Alarm 24-26
TGO Site L _{Aeq} (15min) Contribution							23
21/01/2026	19:35	75	49	20	35	WD: E	Traffic 26-75
						WS: <0.1m/s	Birds 20-31
							Livestock 17-37
							TGO Inaudible
TGO Site L _{Aeq} (15min) Contribution							<20
21/01/2026	22:20	67	41	23	35	WD: N	Traffic 24-67
						WS: <0.1m/s	Insects 25-30
							Livestock 20-28
							TGO Inaudible
TGO Site L _{Aeq} (15min) Contribution							<20
22/01/2026	19:32	70	41	32	35	WD: SW	Birds 31-70
						WS: 1.2m/s	Insects 25-34
							Windblown Vegetation 30-40
							Livestock 20-24
							TGO Inaudible
TGO Site L _{Aeq} (15min) Contribution							<22
22/01/2026	22:00	65	35	25	35	WD: S	MAC Operator 65
						WS: <0.1m/s	Dogs Barking 28-36
							Insects 31-35
							Wildlife 23-29
							TGO Mobile Plant 20-31
TGO Site L _{Aeq} (15min) Contribution							28

Note 1: Meteorological data obtained from TGO's on-site weather station or by direct measurement by the operator.

4.3 Assessment Results - Location R3/29

The results of the attended noise measurements at location R3/29 for the January 2026 survey are summarised in **Table 4** with the relevant EPL limits, the calculated mining noise contribution and prevailing meteorological conditions at the time of each measurement.

Table 4 Operator-Attended Noise Survey Results - Location R3/29							
Date	Time (hrs)	Descriptor (dBA re 20µPa)			EPL Limit	Meteorology ¹	Description and SPL, dBA
		L _{Amax}	L _{Aeq}	L _{A90}			
20/01/2026	20:38	86	66	44	35	WD: SE	Traffic 40-86
						WS: <0.1m/s	Birds 35-57
						Stab Class: D	Insects 41-44
TGO Site L _{Aeq} (15min) Contribution							<34
20/01/2026	23:34	89	67	49	35	WD: SE	Traffic 40-89
						WS: 1.0m/s	Insects 48-51
						Stab Class: D	TGO Inaudible
TGO Site L _{Aeq} (15min) Contribution							<35
21/01/2026	20:19	88	67	47	35	WD: S	Traffic 45-88
						WS: 0.1m/s	Insects 46-50
						Stab Class: E	Birds 42-54
TGO Processing 34-38 (1.5 minutes)							
TGO Site L _{Aeq} (15min) Contribution							32
21/01/2026	23:13	86	64	49	35	WD: S	Traffic 40-86
						WS: 0.2m/s	Insects 40-42
						Stab Class: F	TGO Siren 38-40 (5 seconds)
TGO Processing 31-38							
TGO Site L _{Aeq} (15min) Contribution							34
22/01/2026	20:15	88	65	44	35	WD: S	Traffic 45-88
						WS: 0.3m/s	Offsite Works 40-45
						Stab Class: D	TGO Inaudible
TGO Site L _{Aeq} (15min) Contribution							<34
22/01/2026	22:49	87	66	43	35	WD: SE	Traffic 40-87
						WS: <0.1m/s	Offsite Works 40-42
						Stab Class: F	Insects 35-38
TGO Processing 36-38 (3.5 minutes)							
TGO Mobile Plant 35-39 (1.5 minutes)							
TGO Site L _{Aeq} (15min) Contribution							34

Note 1: Meteorological data obtained from TGO's on-site weather station or by direct measurement by the operator.

4.4 Assessment Results - Location R4

The results of the attended noise measurements at location R4 for the January 2026 survey are summarised in **Table 5** with the relevant EPL limits, the calculated mining noise contribution and prevailing meteorological conditions at the time of each measurement.

Table 5 Operator-Attended Noise Survey Results - Location R4							
Date	Time (hrs)	Descriptor (dBA re 20µPa)			EPL Limit	Meteorology ¹	Description and SPL, dBA
		L _{Amax}	L _{Aeq}	L _{A90}			
20/01/2026	21:27	46	30	24	35	WD: SE WS: <0.1m/s Stab Class: D	Birds 30-46
							Traffic 20-37
							Insects 24-34
							TGO Inaudible
TGO Site L _{Aeq} (15min) Contribution							<20
21/01/2026	00:33	59	44	37	35	WD: SE WS: 2.5m/s Stab Class: D	Windblown Vegetation 37-59
							Insects 39-44
							Traffic 33-37
							TGO Inaudible
TGO Site L _{Aeq} (15min) Contribution							<27
21/01/2026	21:19	42	30	24	35	WD: NE WS: 0.4m/s Stab Class: F	Traffic 20-42
							Insects 24-31
							TGO Inaudible
TGO Site L _{Aeq} (15min) Contribution							<20
22/01/2026	00:23	46	30	24	35	WD: N WS: <0.1m/s Stab Class: F	MAC Operator 46
							Insects 20-25
							Traffic 20-37
							Wildlife 20-30
							TGO Inaudible
TGO Site L _{Aeq} (15min) Contribution							<20
22/01/2026	21:13	43	29	16	35	WD: S WS: <0.1m/s Stab Class: D	Traffic 10-43
							Insects 15-25
							TGO Inaudible
TGO Site L _{Aeq} (15min) Contribution							<20
22/01/2026	23:51	71	56	46	35	WD: E WS: 3.0m/s Stab Class: D	Windblown Vegetation 43-71
							TGO Inaudible
TGO Site L _{Aeq} (15min) Contribution							<35

Note 1: Meteorological data obtained from TGO's on-site weather station or by direct measurement by the operator.

4.5 Assessment Results - Location R5

The results of the attended noise measurements at location R5 for the January 2026 survey are summarised in **Table 6** with the relevant EPL limits, the calculated mining noise contribution and prevailing meteorological conditions at the time of each measurement.

Table 6 Operator-Attended Noise Survey Results - Location R5							
Date	Time (hrs)	Descriptor (dBA re 20 μ Pa)			EPL Limit	Meteorology ¹	Description and SPL, dBA
		L _{Amax}	L _{Aeq}	L _{A90}			
20/01/2026	21:50	77	60	40	35	WD: SE WS: <0.1m/s Stab Class: D	Traffic 30-77
							Offsite Works Depot 38-45 Insects 35-40 TGO Inaudible
TGO Site L _{Aeq} (15min) Contribution							<30
21/01/2026	01:00	75	56	45	35	WD: SE WS: 1.8m/s Stab Class: D	Traffic 40-75
							Offsite Works Depot 47-51 Insects 44-51 TGO Inaudible
TGO Site L _{Aeq} (15min) Contribution							<35
21/01/2026	21:44	81	61	29	35	WD: NE WS: <0.1m/s Stab Class: F	Traffic 25-81
							Offsite Works Depot 28-36 Insects 25-34 TGO Inaudible
TGO Site L _{Aeq} (15min) Contribution							<20
22/01/2026	00:50	77	58	29	35	WD: N WS: <0.1m/s Stab Class: E	Traffic 20-77
							Offsite Works Depot 29-41 Insects 28-34 TGO Inaudible
TGO Site L _{Aeq} (15min) Contribution							<20
22/01/2026	21:39	76	58	26	35	WD: S WS: <0.1m/s Stab Class: E	Traffic 20-76
							Offsite Works Depot 20-36 Insects 25-27 TGO Inaudible
TGO Site L _{Aeq} (15min) Contribution							<20
23/01/2026	00:20	74	55	41	35	WD: E WS: 3.0m/s Stab Class: D	Traffic 30-74
							Windblown Vegetation 30-56 Offsite Works Depot 36-46 TGO Inaudible
TGO Site L _{Aeq} (15min) Contribution							<31

Note 1: Meteorological data obtained from TGO's on-site weather station or by direct measurement by the operator.

4.6 Assessment Results - Location R6

The results of the attended noise measurements at location R6 for the January 2026 survey are summarised in **Table 7** with the relevant EPL limits, the calculated mining noise contribution and prevailing meteorological conditions at the time of each measurement.

Table 7 Operator-Attended Noise Survey Results - Location R6							
Date	Time (hrs)	Descriptor (dBA re 20µPa)			EPL Limit	Meteorology ¹	Description and SPL, dBA
		L _{Amax}	L _{Aeq}	L _{A90}			
20/01/2026	21:06	47	33	29	35	WD: SE WS: <0.1m/s Stab Class: D	MAC Operator 47
							Traffic 25-42 Insects 27-37 TGO Inaudible
TGO Site L _{Aeq} (15min) Contribution							<20
21/01/2026	00:02	49	38	34	35	WD: SE WS: 1.4m/s Stab Class: D	MAC Operator 49
							Traffic 28-44 Windblown Vegetation 20-42 TGO Processing 28-33 (1.5 minutes) TGO Siren 32-34 (45 seconds)
TGO Site L _{Aeq} (15min) Contribution							28
21/01/2026	20:48	46	27	23	35	WD: E WS: 0.3m/s Stab Class: D	MAC Operator 46
							Insects 20-31 Livestock 21-27 TGO Inaudible
TGO Site L _{Aeq} (15min) Contribution							<20
21/01/2026	23:49	46	22	15	35	WD: N WS: <0.1m/s Stab Class: E	MAC Operator 46
							Insects 19-31 Traffic 20-29 TGO Inaudible
TGO Site L _{Aeq} (15min) Contribution							<15
22/01/2026	20:42	51	27	22	35	WD: SE WS: 0.5m/s Stab Class: D	MAC Operator 51
							Livestock 28-35 Insects 20-27 TGO Inaudible
TGO Site L _{Aeq} (15min) Contribution							<20
22/01/2026	23:13	41	24	16	35	WD: SE WS: <0.1m/s Stab Class: F	Livestock 23-41
							Insects 15-23 Traffic 20-28 TGO Inaudible
TGO Site L _{Aeq} (15min) Contribution							<16

Note 1: Meteorological data obtained from TGO's on-site weather station or by direct measurement by the operator.

4.7 Assessment Results - Location R23

The results of the attended noise measurements at location R23 for the January 2026 survey are summarised in **Table 8** with the relevant EPL limits, the calculated mining noise contribution and prevailing meteorological conditions at the time of each measurement.

Table 8 Operator-Attended Noise Survey Results - Location R23							
Date	Time (hrs)	Descriptor (dBA re 20µPa)			EPL Limit	Meteorology ¹	Description and SPL, dBA
		L _{Amax}	L _{Aeq}	L _{A90}			
20/01/2026	20:17	63	46	41	38	WD: SE WS: <0.1m/s Stab Class: D	Traffic 40-63
							Insects 40-68
							TGO Processing 30-34 (1.5 minutes)
TGO Site L _{Aeq} (15min) Contribution							30
20/01/2026	23:14	61	50	45	36	WD: S WS: 1.8m/s Stab Class: D	Traffic 30-61
							Windblown Vegetation 40-57
							TGO Inaudible
TGO Site L _{Aeq} (15min) Contribution							<35
21/01/2026	19:58	66	47	40	38	WD: E WS: <0.1m/s Stab Class: D	Traffic 34-66
							Birds 30-52
							TGO Inaudible
TGO Site L _{Aeq} (15min) Contribution							<30
21/01/2026	22:48	73	52	44	36	WD: E WS: <0.1m/s Stab Class: E	Traffic 43-73
							Insects 38-43
							TGO Hum 34
							TGO Processing 36-40 (1.5 minutes)
							TGO Siren 40-41 (5 seconds)
TGO Site L _{Aeq} (15min) Contribution							34
22/01/2026	19:56	81	50	42	38	WD: SW WS: 0.5m/s Stab Class: D	Birds 35-81
							Traffic 35-63
							TGO Processing 30-38
TGO Site L _{Aeq} (15min) Contribution							33
22/01/2026	22:30	59	46	39	36	WD: SE WS: <0.1m/s Stab Class: F	Traffic 35-59
							Offsite Works 40-47
							TGO Processing 33-40 (3.5 minutes)
							TGO Reverse Alarm 38-40 (10 seconds)
							TGO Mobile Plant 32-39
TGO Site L _{Aeq} (15min) Contribution							31

Note 1: Meteorological data obtained from TGO's on-site weather station or by direct measurement by the operator.

5 Discussion

5.1 Discussion of Results - Location R2

Monitoring between Tuesday 20 January 2026 and Thursday 22 January 2026 identified that TGO activities were audible on two occasions during the assessment period at location R2. The estimated mining contributions were measured at <30dBA, therefore TGO emissions remained below the relevant noise limit of 35dB LAeq(15min). Extraneous sources such as insects, MAC operator noise, livestock, traffic, birds, and windblown vegetation were audible during the measurement period.

5.2 Discussion of Results - Location R3/29

Monitoring between Tuesday 20 January 2026 and Thursday 22 January 2026 identified that TGO activities were audible on three occasions during the assessment period at location R3/29. The estimated mining contributions were measured at <35dBA, therefore TGO emissions remained below the relevant noise limit of 35dB LAeq(15min). Extraneous sources such as traffic, offsite works, windblown vegetation, insects and birds were audible during the measurement period.

5.3 Discussion of Results - Location R4

Monitoring between Tuesday 20 January 2026 and Thursday 22 January 2026 identified that TGO activities remained inaudible during the assessment period at location R4. The estimated mining contributions were measured at <35dBA, therefore TGO emissions remained below the relevant noise limit of 35dB LAeq(15min). Extraneous sources such as traffic, birds, insects, MAC operator noise, wildlife, and windblown vegetation were audible during the measurement period.

5.4 Discussion of Results - Location R5

Monitoring between Tuesday 20 January 2026 and Friday 23 January 2026 identified that TGO activities remained inaudible during the assessment period at location R5. The estimated mining contributions were measured at <35dBA, therefore TGO emissions remained below the relevant noise limit of 35dB LAeq(15min). Extraneous sources such as traffic, offsite works depot, insects, birds and windblown vegetation were audible during the measurement period.

5.5 Discussion of Results - Location R6

Monitoring between Tuesday 20 January 2026 and Thursday 22 January 2026 identified that TGO activities were audible on one occasion during the assessment period at location R6. The estimated mining contributions were measured at <30dBA, therefore TGO emissions remained below the relevant noise limit of 35dB LAeq(15min). Extraneous sources such as traffic, MAC operator noise, livestock, insects and windblown vegetation were audible during the measurement period.

5.6 Discussion of Results - Location R23

Monitoring between Tuesday 20 January 2026 and Thursday 22 January 2026 identified that TGO activities were audible on four occasions during the assessment period at location R23. The estimated mining contributions were measured at <33dBA during the evening period and <34dBA for the night period, therefore the noise limit of 38dB LAeq(15min) for evening and 36dB LAeq(15min) for night was satisfied. Extraneous sources such as traffic, insects, birds, offsite works and windblown vegetation were audible during the measurement period.

6 Comparison of Attended and Unattended Monitoring Results

To address Condition 10D of Part B of the Development Consent SSD 9176045 (2023), a program to calibrate and validate the real-time noise monitoring results with the attended monitoring results has been completed.

The validation compares monthly attended monitoring results against the closest assessed unattended monitoring location. Currently, TGO has an unattended real-time monitoring terminal installed at the Brooklands property (nearest to R23). **Figure 1** identifies the location of the monitor with respect to the attended monitoring locations. It is noted that the Brooklands unattended monitor is situated 600m west of the attended noise monitoring location R23, therefore, background (LA90) noise levels are significantly lower due to offset distance to highway traffic.

Historically, a comparison of mine noise contributions between attended and unattended noise monitoring demonstrates a general consistency between attended and unattended results. It was noted that insects, and highway traffic noise influenced measured noise levels for this assessment. Furthermore, for January 2026, results remained below the relevant criteria for attended locations.

Table 9 provides a summary comparison of results between the attended and unattended noise surveys for R23.

Table 9 Comparison of Attended and Unattended Results

Assessment Type	Time (hrs)	Descriptor (dBA re 20µPa)			Criteria	Mine Noise Contribution	Meteorology ¹	Description and SPL, dBA
		L _{Amax}	L _{Aeq}	L _{A90}				
		Tuesday 20 January 2026						
Attended	20:17	63	46	41	38	<30	WD: SE WS: <0.1m/s Stab Class: D Traffic 40-63 Insects 40-68 TGO Processing 30-34 (1.5 minutes)	
Unattended	20:15	49	39	33	38	<23	No Audio Trigger	
Attended	23:14	61	50	45	36	<35	WD: S WS: 1.8m/s Stab Class: D Traffic 30-61 Windblown Vegetation 40-57 TGO Inaudible	
Unattended	23:15	56	44	37	36	<27	No Audio Trigger	
Wednesday 21 January 2026								
Attended	19:58	66	47	40	38	<30	WD: E WS: <0.1m/s Stab Class: D Traffic 34-66 Birds 30-52 TGO Inaudible	
Unattended	20:00	48	37	31	38	<21	No Audio Trigger	
Attended	22:48	73	52	44	36	36	WD: E WS: <0.1m/s Stab Class: E Traffic 43-73 Insects 38-43 TGO Hum 34-36 TGO Processing 36-43 (1.5 minutes) TGO Siren 40-42 (5 seconds)	
Unattended	23:45	55	41	31	36	<21	No Audio Trigger	
Thursday 22 January 2026								
Attended	19:56	81	50	42	38	33	WD: SW WS: 0.5m/s Stab Class: D Birds 35-81 Traffic 35-63 TGO Processing 30-38	
Unattended	19:58	66	40	32	38	30	TGO Hum	
Attended	22:30	59	46	39	36	33	WD: SE WS: <0.1m/s Stab Class: F Traffic 35-59 Offsite Works 40-47 TGO Processing 33-42 (3.5 minutes) TGO Reverse Alarm 38-40 (10 seconds) TGO Mobile Plant 32-39	
Unattended	22:28	55	42	35	36	33	TGO Hum Birds	

Note 1: Meteorological data obtained from TGO's on-site weather station or by direct measurement by the operator.

7 Conclusion

Muller Acoustic Consulting Pty Ltd (MAC) has completed a Noise Monitoring Assessment (NMA) on behalf of Tomingley Gold Operations Pty Ltd (TGO). The assessment was completed to provide monthly monitoring data so that TGO can actively quantify and manage site noise emissions.

Attended monitoring conducted between Tuesday 20 January 2026 and Friday 23 January 2026 identified that TGO mine noise was audible on several occasions during the measurement period. A review of monitoring data and operator attended observations determined that TGO contributions remained below relevant limits.

This page has been intentionally left blank

Appendix A – Glossary of Terms

A number of technical terms have been used in this report and are explained in **Table A1**.

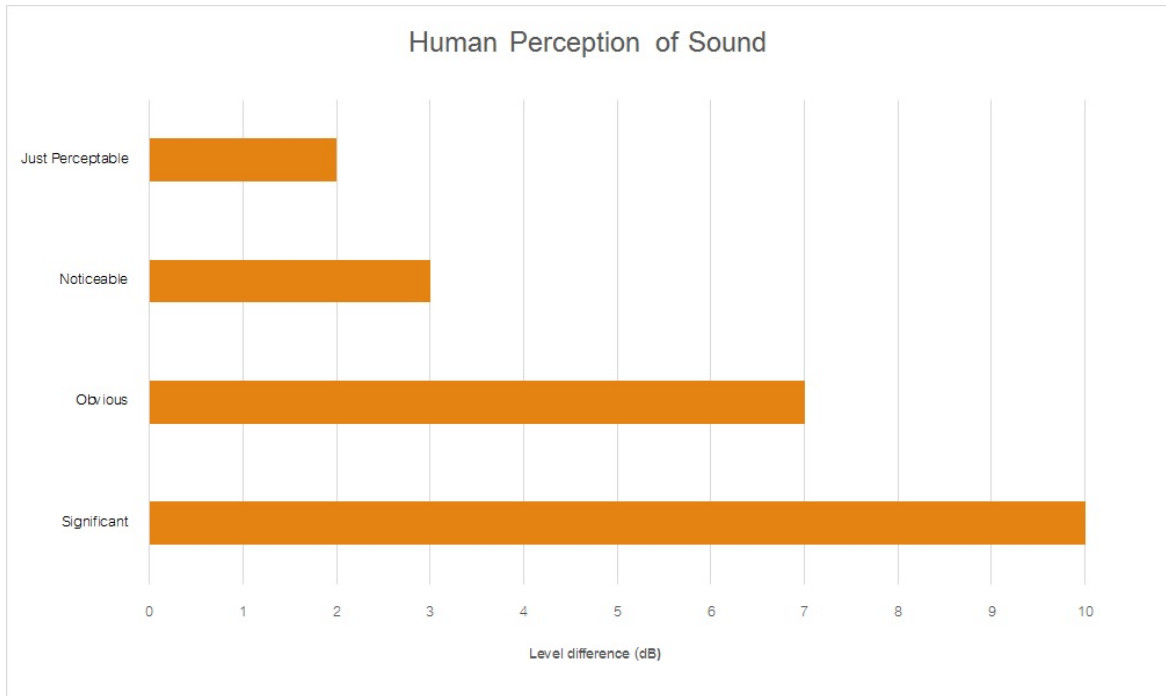
Table A1 Glossary of Acoustical Terms	
Term	Description
1/3 Octave	Single octave bands divided into three parts
Octave	A division of the frequency range into bands, the upper frequency limit of each band being twice the lower frequency limit.
ABL	Assessment Background Level (ABL) is defined in the NPI as a single figure background level for each assessment period (day, evening and night). It is the tenth percentile of the measured L90 statistical noise levels.
Ambient Noise	The total noise associated with a given environment. Typically, a composite of sounds from all sources located both near and far where no particular sound is dominant.
A Weighting	A standard weighting of the audible frequencies designed to reflect the response of the human ear to sound.
Background Noise	The underlying level of noise present in the ambient noise, excluding the noise source under investigation, when extraneous noise is removed. This is usually represented by the LA90 descriptor
dBA	Noise is measured in units called decibels (dB). There are several scales for describing noise, the most common being the 'A-weighted' scale. This attempts to closely approximate the frequency response of the human ear.
dB(Z), dB(L)	Decibels Z-weighted or decibels Linear (unweighted).
Extraneous Noise	Sound resulting from activities that are not typical of the area.
Hertz (Hz)	The measure of frequency of sound wave oscillations per second - 1 oscillation per second equals 1 hertz.
LA10	A sound level which is exceeded 10% of the time.
LA90	Commonly referred to as the background noise, this is the level exceeded 90% of the time.
LAeq	Represents the average noise energy or equivalent sound pressure level over a given period.
LAmx	The maximum sound pressure level received at the microphone during a measuring interval.
Masking	The phenomenon of one sound interfering with the perception of another sound. For example, the interference of traffic noise with use of a public telephone on a busy street.
RBL	The Rating Background Level (RBL) as defined in the NPI, is an overall single figure representing the background level for each assessment period over the whole monitoring period. The RBL, as defined is the median of ABL values over the whole monitoring period.
Sound power level (Lw or SWL)	This is a measure of the total power radiated by a source in the form of sound and is given by $10 \cdot \log_{10} (W/W_0)$. Where W is the sound power in watts to the reference level of 10^{-12} watts.
Sound pressure level (Lp or SPL)	the level of sound pressure; as measured at a distance by a standard sound level meter. This differs from Lw in that it is the sound level at a receiver position as opposed to the sound 'intensity' of the source.

Table A2 provides a list of common noise sources and their typical sound level.

Table A2 Common Noise Sources and Their Typical Sound Pressure Levels (SPL), dBA

Source	Typical Sound Pressure Level
Threshold of pain	140
Jet engine	130
Hydraulic hammer	120
Chainsaw	110
Industrial workshop	100
Lawn-mower (operator position)	90
Heavy traffic (footpath)	80
Elevated speech	70
Typical conversation	60
Ambient suburban environment	40
Ambient rural environment	30
Bedroom (night with windows closed)	20
Threshold of hearing	0

Figure A1 – Human Perception of Sound





Muller Acoustic Consulting Pty Ltd
PO Box 678, Kotara NSW 2289
ABN: 36 602 225 132
Ph: +61 2 4920 1833

mulleracoustic.com

