



**Resources
Regulator**

ARR0001672

PEAK HILL GOLD MINE ANNUAL REHABILITATION REPORT

Wednesday 1 January 2025 to Wednesday 31 December 2025

Summary table

Detail	
Mine	Peak Hill Gold Mine
Reference	ARR0001672
Annual report period commencement date	Wednesday 1 January 2025
Annual report period end date	Wednesday 31 December 2025
Forward program	FWP0001549
Mining leases	GL 5884 (1906), ML 1351 (1992), ML 6042 (1906), ML 6277 (1906), ML 6406 (1906), ML 6389 (1906), ML 1364 (1992), ML 1479 (1992), ML 6310 (1906), ML 6036 (1906)
Lease holder(s)	Alkane Resources Ltd
Contact	Sam Wells
Date of submission	Monday 2 March 2026
Document URL	https://alkres.com/projects/tomingley-gold-project/peak-hill-gold-mine/
<small>Security reminder: Please exercise caution before opening external links. If a link appears suspicious, avoid clicking it and report it to the Resources Regulator.</small>	

Important

The department may make the information in your program and any supporting information available for inspection by members of the public, including by publication on its website or by displaying the information at any of its offices. If you consider any part of your program to be confidential, please communicate this to the department via the message function on this submission within the Resources Regulator Portal.

Mine Details

Project description

The Peak Hill Gold Mine (the “Mine”) is located directly east of the township of Peak Hill, NSW (the “Mine Site”). The Mine is owned and operated by Alkane Resource Ltd (“Alkane”). The Mine ceased production in October 2005 and the heap leach final landform shaped and seeded in December 2005. The site was subsequently placed on care and maintenance. The Mine Site has since been largely rehabilitated, with remaining infrastructure areas utilised for Alkane’s local exploration operations and/or retained for potential re-use. The most recent 2018-2019 exploration campaign with metallurgical test work and resource evaluations determined that the Mine Site contains a known sulphide resource totalling approximately 4.91Mt (million tonnes) grading at 2.05g/t Au and 0.17% Cu (1.0g/t Au cut off). The potential resumption of mining operations would require further assessment and approvals and is therefore outside of the scope of this Report.

Life of mine

15 years

Current development consents, leases and licences

Development consents granted under the *Environmental Planning and Assessment Act 1979*



DA 1049/97
DA 01072
DA 1080/97
DA 01162
DA 99253
DA 15039
DA 01074
DA 1033/97

Authorisations covering the mining area granted under the *Mining Act 1992*

GL 5884 (1906), ML 1351 (1992), ML 6042 (1906), ML 6277 (1906), ML 6406 (1906), ML 6389 (1906), ML 1364 (1992), ML 1479 (1992), ML 6310 (1906), ML 6036 (1906)

Any other approvals, licences, or authorities issued by government agencies that are relevant to the progress of mining operation and rehabilitation activities

EPL5473 WAL 28643 License 451536

Summary of the scope and/or purpose of the new applications or modifications to existing approvals (if applicable)

Nil

Changes to land ownership and land use

Nil

Surface disturbance and rehabilitation activities during the reporting period

Surface disturbance and rehabilitation activities that were conducted and an analysis of the progress against the rehabilitation schedule

No new surface disturbance or rehabilitation undertaken.

Rehabilitation planning activities that were conducted, including any specialist studies

Key activities were planning for remediation of the bare patches. Soil samples will be taken of the bare patches scheduled for rehabilitation in 2027. The fresh topsoil to be imported from Tomingley Gold Extension Project (topsoil stripping for Newell Highway diversion) was also sampled and analysed to confirm suitability as growth media during 2024, with additional sampling of soil stockpiled at Old Thornycroft to be undertaken.

Overview of subsidence repair and/or remediation works undertaken

N/A

Overview of rehabilitation management and maintenance activities

Boxthorn, Prickly Pear and other noxious weeds were controlled through spraying by the Site Supervisor. A patch of St John's Wort (*Hypericum perforatum*) was identified grown in a 400m square patch east of the PSC waste transfer station in 2022. This weed was sprayed during flowering and the location will be monitoring annually for follow up eradication. This weed has proliferated across the Central West in 2022. Excessive macropod numbers were controlled under licence from EES by a licenced professional shooter. Trees and shrubs (self-sown) on the batters of the WRE were cut to maintain ground cover and protect buried sulphides. 105 tonnes of ag lime was spread across the heap leach and WRE landforms in June 2025.

Details of any rehabilitation actions taken as required by any letters, notices or directions issued by government agencies, including the Resources Regulator

See above re soil testing. Preparation of an Action Plan in response to PIP_ASARP_LETT0010170 which includes justification and revision of rehabilitation timeframes in this ARR and associated FWP, planned amendments to the RMP in the next reporting period, and development of completion criteria for salt scalding remediation on the HLP and WRE. A structural engineer will be engaged to inspect the steel structures (planned for February 2026) on the hill which form part of the visitor experience (Proprietary Pit viewing platform, entry shelter and bridge over Crown Workings)

Details of any rehabilitation areas that have achieved the final land use

Nil

Key production milestones

MATERIAL	UNIT	FWP0001549 YEAR1	THIS REPORT
Stripped topsoil (if applicable)	(m ³)	0	0
Rock/overburden	(m ³)	0	0
Ore	(Mt)	0	0
Reject material¹	(Mt)	0	0
Product	(Mt)	0	0

¹This includes coarse rejects, tailings and any other wastes resulting from beneficiation.

Disturbance and rehabilitation statistics

Current disturbance and rehabilitation progression

ELEMENT		UNIT	THIS REPORT
A1	Total disturbance footprint - surface disturbance	(ha)	123.16
B	Total active disturbance	(ha)	8.26
C	Rehabilitation - land preparation	(ha)	0
D	Ecosystem and land use establishment	(ha)	0
E	Ecosystem and land use development	(ha)	114.9
F	Rehabilitation completion	(ha)	0

Rehabilitation key performance indicators (KPIs)

ELEMENT		UNIT	THIS REPORT
G	New disturbance area	(ha)	0
H	New rehabilitation commenced during annual reporting period	(ha)	0
I	Established rehabilitation	(ha)	114.9
J	Annual rehabilitation to disturbance ratio	%	
K	Rehabilitated land to total mine footprint	%	93.29

Progressive achievement of established rehabilitation

	ELEMENT	UNIT	THIS REPORT
L	Established rehabilitation for agricultural final land uses	%	6.35
M	Established rehabilitation for native ecosystem final land uses	%	53.29
N	Established rehabilitation for other/non-vegetated final land uses	%	13.11

Variation to the rehabilitation schedule

Identify the components of the most recent forward program that were not achieved

The importation of topsoil as part of the salt scald remediation trial was not undertaken. The realignment of the Newell Highway at Tomingley Gold Extension Project needs to be completed before trucks can retrieve topsoil from the construction area. Roadworks are scheduled for completion Mar-Apr 2027

Key factors that delayed progressive rehabilitation

Due to delays in the Tomingley Gold Mine Expansion sufficient topsoil was unavailable for importation for the planned salt scald remediation trial. The trial is scheduled to be undertaken in 2027.

Outline actions that will be included in the forward program and carried out to minimise disturbance and undertake progressive rehabilitation as

far as reasonably practical

Logistics and planning constraints for the salt scald remediation trial will be addressed during the next reporting period.

Rehabilitation monitoring and research findings

Rehabilitation monitoring

The rehabilitation monitoring carried out in the annual reporting period

No formal rehabilitation monitoring was undertaken during the reporting period. Due to progress of rehabilitation, and status of Mine Site under care and maintenance, rehabilitation monitoring was restricted to visual monitoring as part of regular site inspections. An AEMR for PHGM for 2025 was submitted to Parkes Council as the consent authority. That document (available on Alkane's website) contains text and photographs of the status of mine site rehabilitation.

Status of performance against rehabilitation objectives and rehabilitation completion criteria

The monitoring program that has been implemented

No formal rehabilitation monitoring was undertaken during the reporting period. Details are provided in the RMP

Are all rehabilitation areas in Landform Establishment phase or higher represented in the monitoring program to assess performance against the rehabilitation objectives and approved or, if not yet approved rehabilitation completion criteria and final landform and rehabilitation plan?

Yes

Year rehabilitation areas will be included as part of the monitoring program

An appraisal of whether rehabilitation is moving towards achieving the proposed rehabilitation objectives, approved or, if not yet approved, rehabilitation completion criteria and final landform and rehabilitation plan as soon as reasonably practicable.

The Mine Site has generally been under rehabilitation since 2005, and the site continues to develop more ecological complexity each year as trees planted in 1996 are producing habitat for birds and other vertebrates and seed for new generations of trees. The 2020-2024 calendar years have seen above average and timely rainfall which resulted in one of the best consecutive cropping and pasture seasons ever experienced in the district. The salt scalding remediation trial is ongoing and will be reflected in updated rehabilitation completion criteria to be prepared in the next reporting period.

Appraisal description

Rehabilitation is moving towards achieving the final land use as soon as reasonably practicable.

Rehabilitation monitoring program findings

No formal monitoring or assessments were undertaken during the reporting period.

Performance issues and their causes including identification of any knowledge gaps that must be addressed

See above re bare patches

Outcomes of rehabilitation research and trials

RRT NUMBER	PROJECT/TRIAL NAME	OBJECTIVE OF TRIAL/PROJECT	METHODOLOGY	EXPECTED DATE OF COMPLETION	STATUS	ON TRACK?
RRT0001116	Scald Remediation	Neutralisation of salinisation	Application of topsoil, biochar and compost	31 Dec 2027	Not started	Yes

Outcomes of completed trials and research

N/A

Attachment 1 - Reporting Definitions

REPORTING CATEGORY		DEFINITION
A1	Total disturbance footprint - surface disturbance	<p>All areas within a mining lease that either have at some point in time or continue to pose a rehabilitation liability due to surface disturbance activities.</p> <p>The total disturbance footprint is the sum of the total active disturbance, decommissioning, landform establishment, growth medium development, ecosystem and land use establishment, ecosystem and land use development and rehabilitation completion (see definitions below).</p> <p>Underground mining operations should not include the footprint of underground mining areas/subsidence management areas in the total disturbance footprint.</p>
A2	Underground Mining Area	Underground mining operations areas/subsidence management areas.
B	Total active disturbance	Includes on-lease exploration areas, stripped areas ahead of mining, infrastructure areas, water management infrastructure, sewage treatment facilities, topsoil stockpile areas, access tracks and haul roads, active mining areas, waste rock emplacements (active/unshaped/in or out-of-pit), tailings dams (active/unshaped/uncapped) and temporary stabilised areas (e.g. areas sown with temporary cover crops for dust mitigation and temporary rehabilitation).
C	Rehabilitation - land preparation	Includes the sum of all disturbed land within a mining lease that have commenced any, or all, of

REPORTING CATEGORY		DEFINITION
		<p>the following phases of rehabilitation - decommissioning, landform establishment and growth medium development.</p> <p>Refer to the glossary of terms in this document for the definition of these phases of rehabilitation.</p>
D	Ecosystem and land use establishment	<p>Includes the area which has been seeded/planted with the target vegetation species for the intended final land use. However, vegetation has not matured to a stage where it can be demonstrated that it will be sustainable for the long term and or require only a maintenance regime consistent with target reference/analogue sites.</p> <p>Typically, rehabilitation areas would be in this phase for at least two years (and usually more) before rehabilitation can be classified as being in the ecosystem and land use development phase. This phase does not apply to infrastructure areas that are being retained as part of final land use for the site.</p>
E	Ecosystem and Land Use Development	<p>Rehabilitation has matured to a level where target revegetation outcomes are on a trajectory towards meeting the final rehabilitation objectives and rehabilitation completion criteria (as verified by monitoring).</p> <p>This phase includes infrastructure areas that are to be retained for an approved post mining land use, following completion of all necessary measures to render the infrastructure fit for this purpose (for example structural integrity).</p>

REPORTING CATEGORY		DEFINITION
F	Rehabilitation Completion	The Resources Regulator has determined in writing that the mining area has achieved the approved rehabilitation objectives and approved rehabilitation completion criteria and final landform and rehabilitation plan following the submission of Form: <i>Rehabilitation completion and/or review of rehabilitation cost estimate and/or notification of mine or petroleum site closure</i> .
G	New active disturbance area	The area of any new active disturbance that has been created during the annual reporting period (definition A1 in Table 5).
H	New rehabilitation commenced during annual reporting period	The sum of any new rehabilitation commenced in the annual reporting period. These areas may be in the rehabilitation land preparation phase or the ecosystem & land use establishment phase (definitions C and D in Table 5).
I	Established rehabilitation (hectares)	The total area of land that is verified to be within either the ecosystem and land use development phase or the rehabilitation completion phase (definitions E & F in Table 5).
J	Annual rehabilitation to disturbance ratio	The rehabilitation to disturbance ratio (H/G) indicates how many hectares of new rehabilitation are undertaken for each hectare of land disturbed during the year. A ratio of 1/1 indicates that the area of new rehabilitation and disturbance in that year are the same.
K	% Rehabilitated land to total mine footprint	The proportion of the total mine footprint (area of land that has been disturbed by past or present surface disturbance activities) that has established rehabilitation ($I/A1 \times 100$). For open cut mining, the proportion of the total mine footprint verified to be "established rehabilitation" should substantially increase as an operation progresses towards mine closure.

REPORTING CATEGORY		DEFINITION
L	Established rehabilitation for agricultural final land uses (hectares)	The percentage of total area of land that is verified to be within either the ecosystem and land use development phase or the rehabilitation completion phase (definitions E & F in Table 5) that have been returned to an agricultural final land use.
M	Established rehabilitation for native ecosystem final land uses (hectares)	The percentage of total area of land that is verified to be within either the ecosystem and land use development phase or rehabilitation completion phase (definitions E & F in Table 5) that have been returned to native ecosystem final land use.
N	Established rehabilitation for other/non-vegetated final land uses (hectares)	The percentage of total area of land that is verified to be within either the ecosystem and land use development phase or the rehabilitation completion phase (definitions E & F in Table 5) that have been returned to other/non-vegetated final land use.

Attachment 2 - Definitions

WORD	DEFINITION
Active	In the context of rehabilitation, land associated with mining domains is considered 'active' for the period following disturbance until the commencement of rehabilitation.
Active mining phase of rehabilitation	In the context of rehabilitation, the active mining phase of rehabilitation constitutes the rehabilitation activities undertaken during mining operations such as salvaging and managing soil resources, salvaging habitat resources, and native seed collection. This phase also includes management actions taken during operations to manage risks to rehabilitation and enhance rehabilitation outcomes such as selective handling of waste rock and management of tailings emplacements.
Analogue site	In the context of rehabilitation, an analogue site is a 'reference site' that represents an example of the defining characteristics (such as vegetation composition and structure or agricultural productivity) of the final land use. Characteristics of analogue sites can be assessed to develop the rehabilitation objectives and completion criteria for final land use domains.
Annual rehabilitation report and forward program	As described in the Mining Regulation 2016.
Annual reporting period	As defined in the Mining Regulation 2016.
Closure	A whole-of-mine-life process, which typically culminates in the relinquishment of the mining lease. It includes decommissioning and rehabilitation to achieve the approved final land use(s).

WORD	DEFINITION
Decommissioning	The process of removing mining infrastructure and removing contaminants and hazardous materials.
Decommissioning Phase of Rehabilitation	Activities associated with the removal of mining infrastructure and removal and/or remediation of contaminants and hazardous materials. In the context of the rehabilitation management plan this phase of rehabilitation may also include studies and assessments associated with decommissioning and demolition of infrastructure or works carried out to make safe or 'fit for purpose' built infrastructure to be retained for future use(s) following lease relinquishment.
Department	Department of Primary Industries and Regional Development.
Disturbance	See Surface Disturbance.
Disturbance area	<p>An area that has been disturbed and that requires rehabilitation.</p> <p>This may include areas such as on-licence exploration areas, stripped areas ahead of mining, infrastructure areas, water management infrastructure, sewage treatment facilities, topsoil stockpile areas, access tracks and haul roads, active mining areas, waste emplacements (active/unshaped/in or out-of-pit), tailings dams (active/unshaped/uncapped), and areas requiring rehabilitation that are temporarily stabilised (i.e. managed to minimise dust generation and/or erosion).</p>
Domain	An area (or areas) of the land that has been disturbed by mining and has a specific operational use (mining domain) or specific final land use (final land use domain). Land within a domain typically has similar geochemical and/or geophysical characteristics and therefore requires specific rehabilitation

WORD	DEFINITION
	activities to achieve the associated final land use.
Ecosystem and Land Use Development	<p>This phase of rehabilitation consists of the activities to manage maturing rehabilitation areas on a trajectory to achieving the approved rehabilitation objectives and completion criteria.</p> <p>For vegetated land uses this phase may include processes to develop characteristics of functional self-sustaining ecosystems, such as nutrient recycling, vegetation flowering and reproduction, and increasing habitat complexity, and development of a productive, self-sustaining soil profile.</p> <p>This phase of rehabilitation may include specific vegetation management strategies and maintenance such as tree thinning, supplementary plantings and weed management.</p>
Ecosystem and Land Use Establishment	<p>This phase of rehabilitation consists of the processes to establish the approved final land use following construction of the final landform.</p> <p>For vegetated land uses this rehabilitation phase includes establishing the desired vegetation community and implementing land management activities such as weed control. This phase of rehabilitation may also include habitat augmentation such as installation of nest boxes.</p>
Exploration	Has the same meaning as that term under the State Environmental Planning Policy (Mining, Petroleum Production and Extractive Industries) 2007.
Final landform and rehabilitation plan	As defined in the Mining Regulation 2016.

WORD	DEFINITION
Final land use	As defined in the Mining Regulation 2016.
Form and way	Means the form and way approved by the Secretary. Approved form and way documents are available on the department's website.
Growth Medium Development	<p>This phase of rehabilitation consists of activities required to establish the physical, chemical and biological components of the substrate required to establish the desired vegetation community (including short lived pioneer species).</p> <p>This phase may include spreading the prepared landform with topsoil and/or subsoil and/or soil substitutes, applying soil ameliorants to enhance the physical, chemical and biological characteristics of the growth media, and actions to minimise loss of growth media due to erosion.</p>
Habitat	Has the same meaning as that term under the Biodiversity Conservation Act 2016 and the Fisheries Management Act 1994 (as relevant).
Indicator	An attribute of the biophysical environment (e.g. pH, topsoil depth, biomass) that can be used to approximate the progression of a biophysical process. It can be measured and audited to demonstrate (and track) the progress of an aspect of rehabilitation towards a desired completion criterion (i.e. defined end point). It may be aligned to an established protocol and used to evaluate changes in a system.
Land	As defined in the Mining Act 1992.

WORD	DEFINITION
Landform Establishment	<p>This phase of rehabilitation consists of the processes and activities required to construct the final landform.</p> <p>In addition to profiling the surface of rehabilitation areas to the approved final landform profile this phase may include works to construct surface water drainage features, encapsulate problematic materials such as tailings, and prepare a substrate with the desired physical and chemical characteristics (e.g. rock raking or ameliorating sodic materials).</p>
Large mine	As defined in the Mining Regulation 2016.
Lease holder	The holder of a mining lease.
Life of mine	The timeframe of how long a mine is approved to mine, from commencement to closure.
Mine rehabilitation portal	<p>Means the Resources Regulator's online portal that lease holders must use (via a registered account) to:</p> <ul style="list-style-type: none"> ▪ upload rehabilitation geographical information system (GIS) spatial data ▪ develop rehabilitation GIS spatial data (using online tracing functions) ▪ generate rehabilitation plans and rehabilitation statistics using the map viewer and Rehabilitation Key Performance Indicator functionalities. <p>Data submitted to the mine rehabilitation portal is collated in a centralised geodatabase for use by</p>

WORD	DEFINITION
	the Resources Regulator to regulate rehabilitation performance of lease holders.
Mining area	As defined in the Mining Act 1992.
Mining domain	A land management unit with a discrete operational function (e.g. overburden emplacement), and therefore similar geophysical characteristics, that will require specific rehabilitation treatments to achieve the final land use(s).
Mining land	As defined in the Mining Act 1992.
Native vegetation	Has the same meaning as that term under section 60B of the Local Land Services Act 2013.
Overburden	Material overlying coal or a mineral deposit.
Performance indicator	An attribute of the biophysical environment (for example pH, slope, topsoil depth, biomass) that can be used to demonstrate achievement of a rehabilitation objective. It can be measured and audited to demonstrate (and track) the progress of an aspect of rehabilitation towards a desired completion criterion, that is, a defined end point. It may be aligned to an established protocol and used to evaluate changes in a system.
Phases of rehabilitation	The stages and sequences of actions required to rehabilitate disturbed land to achieve the final land use. The phases of rehabilitation are:

WORD	DEFINITION
	<ul style="list-style-type: none"> ▪ active mining ▪ decommissioning ▪ landform Establishment ▪ growth medium development ▪ landform Establishment ▪ ecosystem and land use establishment ▪ ecosystem and land use development
Progressive rehabilitation	The progress of rehabilitation towards achieving the approved rehabilitation completion criteria. This may be described in terms of domains, phases, performance indicators and rehabilitation completion criteria.
Rehabilitation Completion	The final phase of rehabilitation when a rehabilitation area has achieved the approved rehabilitation objectives and rehabilitation completion criteria for the final land use. Rehabilitation areas may be classified as complete when the Resources Regulator has determined in writing that the relevant rehabilitation obligations have been fulfilled following submission of <i>Form ESF2 Rehabilitation completion and/or review of rehabilitation cost estimate application</i> by the lease holder.
Rehabilitation Completion criteria	As defined in the Mining Regulation 2016.
Rehabilitation cost estimate	As defined in the Mining Regulation 2016.

WORD	DEFINITION
Rehabilitation management plan	As defined in the Mining Regulation 2016.
Rehabilitation objectives	As defined in the Mining Regulation 2016.
Rehabilitation risk assessment	As defined in the Mining Regulation 2016.
Rehabilitation schedule	The defined timeframes for progressive rehabilitation set out in the forward program.
Relevant stakeholders	<p>Means any persons or bodies who may be affected by the mining operations, including rehabilitation, carried out on the lease land, and includes:</p> <ul style="list-style-type: none"> ▪ the relevant development consent authority ▪ the local council ▪ the relevant landholder(s) ▪ community consultative committee (if required under the development consent) or equivalent consultative group ▪ affected land holder(s) ▪ government agencies relevant to the final land use ▪ affected infrastructure authorities (electricity, telecommunications, water, pipeline, road, rail authorities) ▪ local Aboriginal communities, and ▪ any other person or body determined by the Minister to be a relevant stakeholder in relation to

WORD	DEFINITION
	a mining lease.
Risk	The effect of uncertainty on objectives. It is measured in terms of consequences and likelihood (AS/NZS ISO 31000:2009).
Secretary	The Secretary of the department.
Security deposit	An amount that a mining lease holder is required to provide and maintain under a mining lease condition, to secure funding for the fulfilment of obligations under the lease (including obligations that may arise in the future).
Surface disturbance	Includes activities that disturb the surface of the mining area, including mining operations, ancillary mining activities and exploration.
Tailings	A combination of the fine-grained solid material remaining after the recoverable metals and minerals have been extracted from the mined ore, and any process water ² .
Waste	Has the same meaning as that term under the <i>Protection of the Environment Operations Act 1997</i> .

²Commonwealth of Australia (DITR), 2007. Tailings Management.

Attachment 3 - Rehabilitation Complaints

DATE	COMPLAINANT	COMPLAINT DETAILS	RESPONSE DETAILS	STATUS OF RESPONSE	DATE RESPONSE COMPLETED (IF APPLICABLE)
------	-------------	-------------------	------------------	--------------------	---

Attachment 4 - Stakeholder consultation

DATE	STAKEHOLDER	CONSULTATION ACTIVITIES AND FORMS	MATTERS SUBJECT TO CONSULTATION	ACTIONS TAKEN
15 Nov 2025	Peak Hill Aboriginal Lands Council	Meetings with Stakeholder	Illegal dumping and illegal prospecting on land adjoining the mining leases.	Alkane installed new fencing and signage against Warregal Road (southern boundary of PHLALC-owned land)
14 Nov 2024	NSW Resources Regulator	TAP - Landform Establishment LETT0009600	Bare patches on WRE and HDLP	Options assessment for remediation, including importation of material from TGO
9 Oct 2025	The Resources Regulator	PIP_ASARP_LETT0010170	Revised rehabilitation timeline in ARR, FWP, and RMP, development of completion criteria	Preparation of this ARR and associated FWP, update of RMP and development of completion criteria to be undertaken in the next reporting period.

Attachment 5 - Plans

Plan 1A attachment not provided.

Plan 1B attachment not provided.

203 PHGM PLAN 1A CURRENT STATUS OF MINING AND REHABILITATION



Legend

Rehabilitation

- Decommissioning
- Landform Establishment
- Growth Media Development
- Ecosystem and Land Use Establish
- Ecosystem and Land Use Develop
- Relinquishment (Rehabilitated)
- Rehabilitation Completion

Disturbance

- Beneficiation Facility
- Infrastructure Area
- Other
- Overburden Emplacement Area
- Tailings Storage Facility
- Underground Mining Area (SMP)
- Active Mining Area (Open cut void)
- Water Management Area

Project Approval Boundary

Mine Operations Area

World Imagery

Low Resolution 15m Imagery

High Resolution 60cm Imagery

High Resolution 30cm Imagery

Citations

1: 21,384



1,086.3 0 543.15 1,086.3 Meters

WGS_1984_Web_Mercator_Auxiliary_Sphere
© DRE

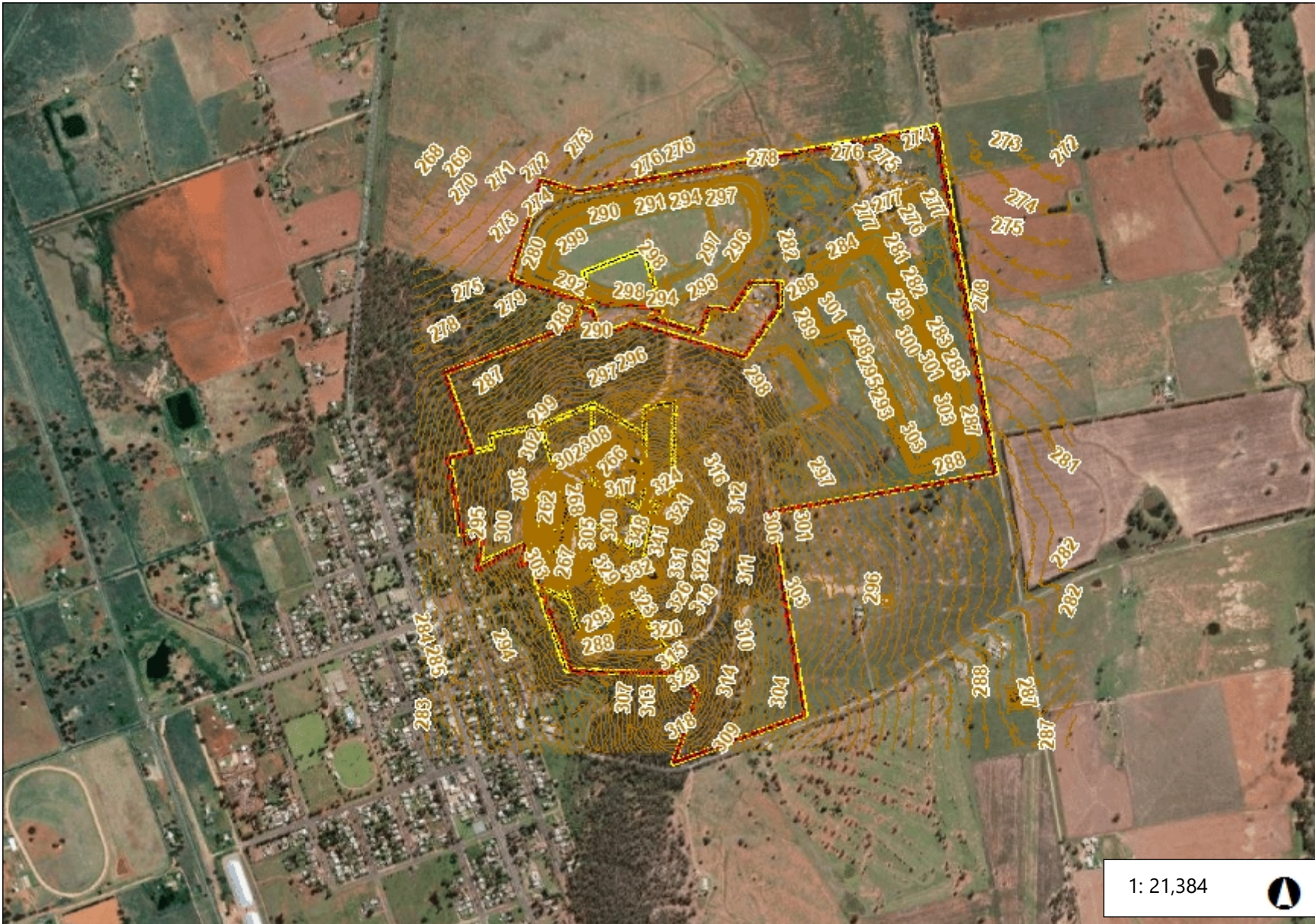
This map is a user generated static output from an Internet mapping site and is for reference only. Data layers that appear on this map may or may not be accurate, current, or otherwise reliable.

THIS MAP IS NOT TO BE USED FOR NAVIGATION

Notes

Peak Hill Gold Mine
ARR 2025 Plan 1A
02/03/2026
Sub ID: 11610, 11611

203 PHGM PLAN 1B CURRENT LANDFORM CONTOURS



Legend

- Current Landform Contours
- ▭ Project Approval Boundary
- ▭ Mine Operations Area
- World Imagery
- Low Resolution 15m Imagery
- High Resolution 60cm Imagery
- High Resolution 30cm Imagery
- Citations

1: 21,384



1,086.3 0 543.15 1,086.3 Meters

WGS_1984_Web_Mercator_Auxiliary_Sphere
© DRE

This map is a user generated static output from an Internet mapping site and is for reference only. Data layers that appear on this map may or may not be accurate, current, or otherwise reliable.

THIS MAP IS NOT TO BE USED FOR NAVIGATION

Notes

Peak Hill Gold Mine
ARR 2025 Plan 1B
02/03/2026
Sub ID: 11615